

**AGENDA
REGULAR DRAINAGE MEETING
JULY 11, 2018
8:30 A.M.**

1. Open Meeting
2. Approve Agenda
3. Approve Minutes
DD 8 & DD 122 June 27, 2018 Public Hearing on Completion of Contract
June 27, 2018 Regular Drainage Meeting

Documents:

[6_27_2018 - DRAINAGE MINUTES.PDF](#)
[DD 8 AND 122 COMPLETION HRG 6_27_2018 - MINUTES.PDF](#)

4. DD 22 - Approve Plans And Specifications
5. DD 72 - Acknowledge Receipt Of Completion Report And Set Completion Hearing Date

Documents:

[6833 - DD 72 COMPLETION REPORT.PDF](#)

6. DD 52 - Approve Work Order Request #215

Documents:

[DD 52 WO 215 REQUEST.PDF](#)
[DD 52 WO 215 MAP.PDF](#)

7. DD 143 - Discuss, With Possible Action, Golf Course Seeding

Documents:

[DD 143 SEEDING.PDF](#)

8. DD 25 - Discuss, With Possible Action, Repair Summary For Work Order #209

Documents:

[DD25WO209.PDF](#)

9. DD 34 - Discuss, With Possible Action, Repair Summary For Work Order #206

Documents:

[DD34WO206.PDF](#)

10. DD 55-3 Lat 12 - Discuss, With Possible Action, Repair Summary For Work Order #201

Documents:

[DD55-3WO201.PDF](#)

11. DD 119 - Discuss, With Possible Action, Repair Summary For Work Order #210

Documents:

[DD119WO210.7-9-18.PDF](#)

12. DD 167 - Discuss, With Possible Action, Repair Summary For Work Order #208

Documents:

[DD167WO208.PDF](#)

13. Other Business

14. Adjourn Meeting

REGULAR DRAINAGE MEETING

6/27/2018 - Minutes

1. Open Meeting

Hardin County Board of Supervisors Chairman, BJ Hoffman, opened the meeting. Also present were Supervisors, Lance Granzow and Renee McClellan; Landowner, Jim Cleveland; Contractor, Matt DeSchamp with M & D Construction; Lee Gallentine with Clapsaddle-Garber Associates (CGA); Drainage Clerk, Tina Schlemme.

2. Approve Agenda

Granzow moved, Hoffman seconded to approve the agenda as presented. All ayes. Motion carried.

3. Approve Minutes

Granzow moved, Hoffman seconded to approve the minutes of the June 13, 2018 regular drainage meeting. All ayes. Motion carried.

4. Approve Claims For Payment

Granzow moved, Hoffman seconded to approve the claims for payment with pay date of Friday, June 29, 2018. All ayes. Motion carried.

DD 22 ENG SVCS 5/9-6/15	Clapsaddle-Garber Assoc	\$ 1,111.80
DD 1 WO 91 WATERWAY INVESTIGATION 10/1/17-6/15/18	Clapsaddle-Garber Assoc	\$ 640.55
DD 1 RECLASS COMMISSION	Walters, Chuck	\$ 205.20
DD 1 RECLASS COMMISSION	Prochaska, Dennis	\$ 205.20
DD 8 COMPLETION HRG NOTICE 6-27-2018	Mid-America Publishing Corp	\$ 17.25
DD 25 WO 48 REVISIONS TO UPRR TILE CROSSING 4/6-6/	Clapsaddle-Garber Assoc	\$ 582.00
DD 34 ANNEXATION COMMISSION	Walters, Chuck	\$ 111.00
DD 34 ANNEXATION COMMISSION	Prochaska, Dennis	\$ 111.00
DD 41 WO 194 ENG SVCS 10/1/17-6/1/18	Clapsaddle-Garber Assoc	\$ 1,786.10
DD 72 ENG SVCS & RECLASS OVERCHG CREDIT 5/9-6/1	Clapsaddle-Garber Assoc	\$ 522.40
DD 72 RECLASS COMMISSION	Prochaska, Dennis	\$ 273.60
DD 72 RECLASS COMMISSION	Walters, Chuck	\$ 273.60
DD 72 WO 71 PAY EST 5	M D Construction, inc	\$14,910.03
DD 122 COMPLETION HRG NOTICE 6-27-2018	Mid-America Publishing Corp	\$ 17.26
DD 143 RECLASS COMMISSION	Prochaska, Dennis	\$ 269.40
DD 143 RECLASS COMMISSION	Walters, Chuck	\$ 269.40
DD 55-3 LAT 9 RECLASS COMMISSION	Walters, Chuck	\$ 109.80
DD 55-3 LAT 9 RECLASS COMMISSION	Prochaska, Dennis	\$ 109.80
DD 55-3 LAT 9A RECLASS COMMISSION	Walters, Chuck	\$ 109.80
DD 55-3 LAT 9A RECLASS COMMISSION	Prochaska, Dennis	\$ 109.80
DD 55-3 LAT 9C RECLASS COMMISSION	Prochaska, Dennis	\$ 109.80
DD 55-3 LAT 9C RECLASS COMMISSION	Walters, Chuck	\$ 109.80

5. DD 95 - Discuss, With Possible Action, Landowner Concerns Re: Current Project

Cleveland explained that his neighbors receive most of the benefit for the tile through his family's land and feels it's unfair that his dad pays 42% of the cost. He stated the county used to just do spot repairs and doesn't understand why a longer length of tile is being replaced. Granzow explained that the tile is in poor condition and to repair a segment can sometimes being a longer length until they find good tile to connect to. Cleveland stated he has concerns regarding his dad's health as he's very upset with the drainage repairs happening. Gallentine presented photos of a new blowout on the lateral that the contractor noticed while out doing the current repair. This location is approximately 20 feet west of the previous repair. There was another sinkhole found on the main near the lateral 3 connection. Cleveland asked that they leave the hole on the main for now as the water is flowing. He will mark the location with a flag and farm around it. The Trustees agreed they would leave the hole as long as water is flowing. Granzow moved, McClellan seconded to repair the new lateral blowout from the previous repair. If the repair needs to go further than the 20 feet, then CGA is to get back to the Trustees. It was discussed that if it does need to go further, they may open up the tile and obtain a legal agreement from Cleveland. All ayes. Motion carried.

6. DD 72 - Discuss, With Possible Action, Contractor Updates
DeSchamp stated the project is pretty much complete. All punchlist items have been completed and he is ready to receive his final payment as has bills that need paid. Schlemme and Gallentine explained that a Completion Report needs submitted. Once acknowledged by the Trustees, than a completion hearing needs scheduled, which is typically about 20 days later. Once the completion of the project is approved then the Code of Iowa states payment must not occur until 30 days or more after. DeSchamp stated he felt the engineer did not respond timely to his concerns and wants the project wrapped up as soon as possible. Gallentine stated he would have the completion report ready for the next meeting on July 11, 2018. Schlemme added that once the completion report is acknowledged at the July 11 meeting, that they could schedule an August 1 hearing. If no landowners raise concerns and the Trustees are able to accept the completion on that date, then the final payment could be made as soon as September 1, but the next payment process will not occur until September 14.
7. DD 22 - Approve Plans And Specifications And Set Bid Letting Date
Gallentine explained that Thomas was called away to another meeting so the plans and specifications were ready, but but not formally submitted. The Trustees stated they were okay with setting the date and approving the plans and specs at their next meeting. McClellan moved, Granzow seconded to set the bid letting for Wednesday, July 25, 2018 at 8:30 a.m. in the large conference room of the Hardin County Courthouse. All ayes. Motion carried.
8. DD 1 - Approve Correspondence With Landowner
McClellan moved, Granzow seconded to approve the correspondence with landowner, Michael Rickert. All ayes. Motion carried.
9. Discuss, With Possible Action, IDDA Invoice And Benefits
The Trustees agreed not to become members of the IDDA at this time.
10. Other Business
DD 72 - Gallentine stated that with accusations made from the contractor, that he is open to have a conversation with any of the Trustees. He also explained that there had been concerns his reclassification expenses had exceeded the previously approved \$5,000. He stated he has reduced the most recent invoice for that overage so the district has been refunded. Schlemme added that this reduction is included in the payment made on the claims approved this meeting.
11. Adjourn Meeting
McClellan moved, Granzow seconded to adjourn the meeting. All ayes. Motion carried.

**PUBLIC HEARING ON COMPLETION OF CONTRACT
ON REPAIRS TO MAIN TILE DRAINAGE DISTRICT 122 AND
LATERAL 2 TILE DRAINAGE DISTRICT 8, HARDIN COUNTY**

6/27/2018 - Minutes



1. Open Meeting
Hardin County Board of Supervisors Chairman, BJ Hoffman, opened the meeting. Also present were Supervisors, Lance Granzow and Renee McClellan; Landowner, Marvin Kramer; Contractor, Matt DeSchamp with M & D Construction; Lee Gallentine with Clapsaddle-Garber Associates (CGA); Drainage Clerk, Tina Schlemme.
2. Approve Agenda
McClellan moved, Granzow seconded to approve the agenda as presented. All ayes. Motion carried.
3. Introductions/Attendance
Introductions were made.
4. Open Public Hearing
Hoffman opened the public hearing.
5. Verify Publication
The publication was verified as being published in the Eldora Herald Index on June 12, 2018.
6. Explanation Of Project
The hearing was then turned over to Gallentine who explained the project as outlined in the Engineer's Completion Report. He further explained the project deviations and change orders that resulted from the project. Gallentine recommended that the entire project be walked and reviewed just prior to the expiration of the contract warranty period. The Trustees agreed for Schlemme to remind the Trustees to look at the warranty in 1.5 years.
7. Written Or Verbal Comments/Discussion
Kramer asked to see the financial information for the project in which Schlemme handed out a list of claims paid, as well as, the amounts assessed to all landowners. Kramer stated he did not have any concerns or questions with the information.
8. Damage Claims
No damage claims were submitted.
9. Close Public Hearing
McClellan moved, Granzow seconded to close the public hearing.
10. Possible Action

Granzow moved, McClellan seconded to approve the completion of the project. All ayes. Motion carried.

Granzow moved, McClellan seconded to approve the final pay estimate to Cole Excavating. All ayes. Motion carried.
11. Other Business
None.
12. Adjourn Meeting
McClellan moved, Granzow seconded to adjourn the meeting. All ayes. Motion carried.



**COMPLETION REPORT
ON
IMPROVEMENTS TO
MAIN TILE
DRAINAGE DISTRICT NO. 72
HARDIN COUNTY, IOWA
(PROJECT 6833)**

	<p>I HEREBY CERTIFY THAT THIS ENGINEERING DOCUMENT WAS PREPARED BY ME OR UNDER MY DIRECT PERSONAL SUPERVISION AND THAT I AM A DULY LICENSED PROFESSIONAL ENGINEER UNDER THE LAWS OF THE STATE OF IOWA</p> <p style="text-align: center;">  LEE O. GALLENTINE, P.E. </p> <p style="text-align: right;"> PE July 9, 2018 DATE </p> <p>LICENSE NUMBER: 15745 MY LICENSE RENEWAL DATE IS DECEMBER 31, 2018 PAGES OR SHEETS COVERED BY THIS SEAL: SHOWN ON TABLE OF CONTENTS</p>
---	--



OFFICE LOCATIONS

739 Park Avenue
 Ackley, IA. 50601
 Phone: 641-847-3273
 Fax: 641-847-2303

16 East Main Street
 Marshalltown, IA 50158
 Phone: 641-752-6701
 Fax: 641-752-2849

511 Bank Street
 Webster City, IA 50595
 Phone: 515-832-1876
 Fax: 515-832-1932

**Completion Report on Improvements to
Main Tile Drainage
District No. 72
Hardin County, Iowa**

Table of Contents	Pg. 1
Report	
Project Timeline	Pg. 2
Project Deviations	Pg. 3
Final Project Costs	Pg. 3
Pending Items	Pg. 4
Appendices	
As-Built Plan Sheets	App. A
Final Pay Estimate	App. B
Lien Waivers	App. C

**Completion Report on Improvements to
Main Tile Drainage
District No. 72
Hardin County, Iowa**

PROJECT TIMELINE: The Hardin County Board of Supervisors, acting as District Trustees, requested Ryken Engineering to investigate and report concerning repairs and/or improvements to the Main tile of Drainage District No. 72. As a result, Ryken Engineering generated an Engineer's Report dated February 20, 2017 and a Supplement to Engineer's Report dated April 18, 2017 summarizing past improvements and repairs, investigating the necessity and feasibility of repairs and/or improvements to a portion of the existing Main tile of Drainage District No. 72, and presenting opinion of construction costs associated with said repairs and/or improvements. A hearing concerning said report was conducted. As a result of the hearing, the Trustees authorized Ryken Engineering to proceed with completion of project plans and specifications for the improvements to said Main tile and proceed with a bid letting.

Ryken Engineering completed the authorized plans and specifications and a bid letting date of August 30, 2017 was set. The project was advertised and bids were received from qualified contractors. The following bids were received for the polypropylene alternate bid:

- | | |
|---|--------------------|
| 1. MD Construction Inc of Garwin, Iowa | Bid = \$362,801.50 |
| 2. Hall Backhoe and Trenching LLC of Roland, Iowa | Bid = \$372,931.60 |
| 3. Graff Excavating Inc of Toledo, Iowa | Bid = \$478,762.50 |

The District Trustees identified MD Construction Inc as the lowest responsible bidder along with polypropylene tile with trench compaction, mandrel testing, and CCTV inspection as the preferred material/installation for the improvements to district facilities and awarded the project. The contract was signed on September 8, 2017. Construction activities were started the week of October 2, 2017. Weather and working conditions for this type of construction were favorable (except for the winter months) and the contractor worked until the Main tile was improved and the only work remaining was site cleanup, mandrel testing, and CCTV inspection. This was achieved April 26, 2018 (approximately 2 weeks before the May 11, 2018 contract completion date). The only remaining punchlist item is the removal of the rock/debris in the tile between access structures 1 and 2, but the District Trustees have reached an agreement with MD Construction on how to handle this in the future.

PROJECT DEVIATIONS: - This project followed the authorized plans and specifications fairly well with only the following deviations (for reference, see as-built plan sheets included in Appendix A):

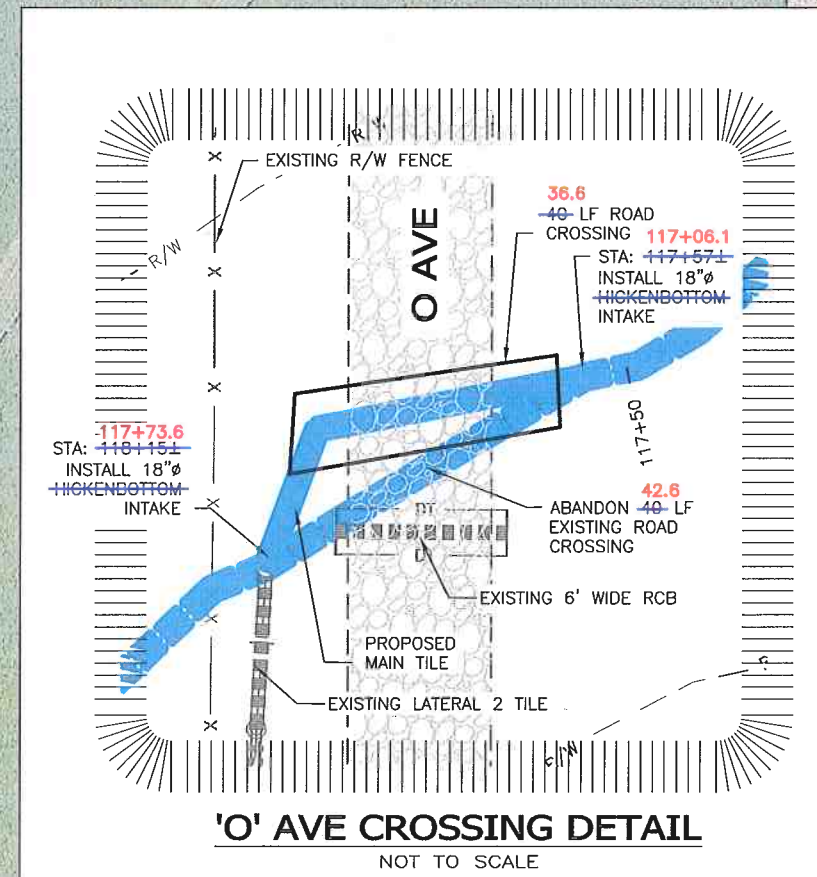
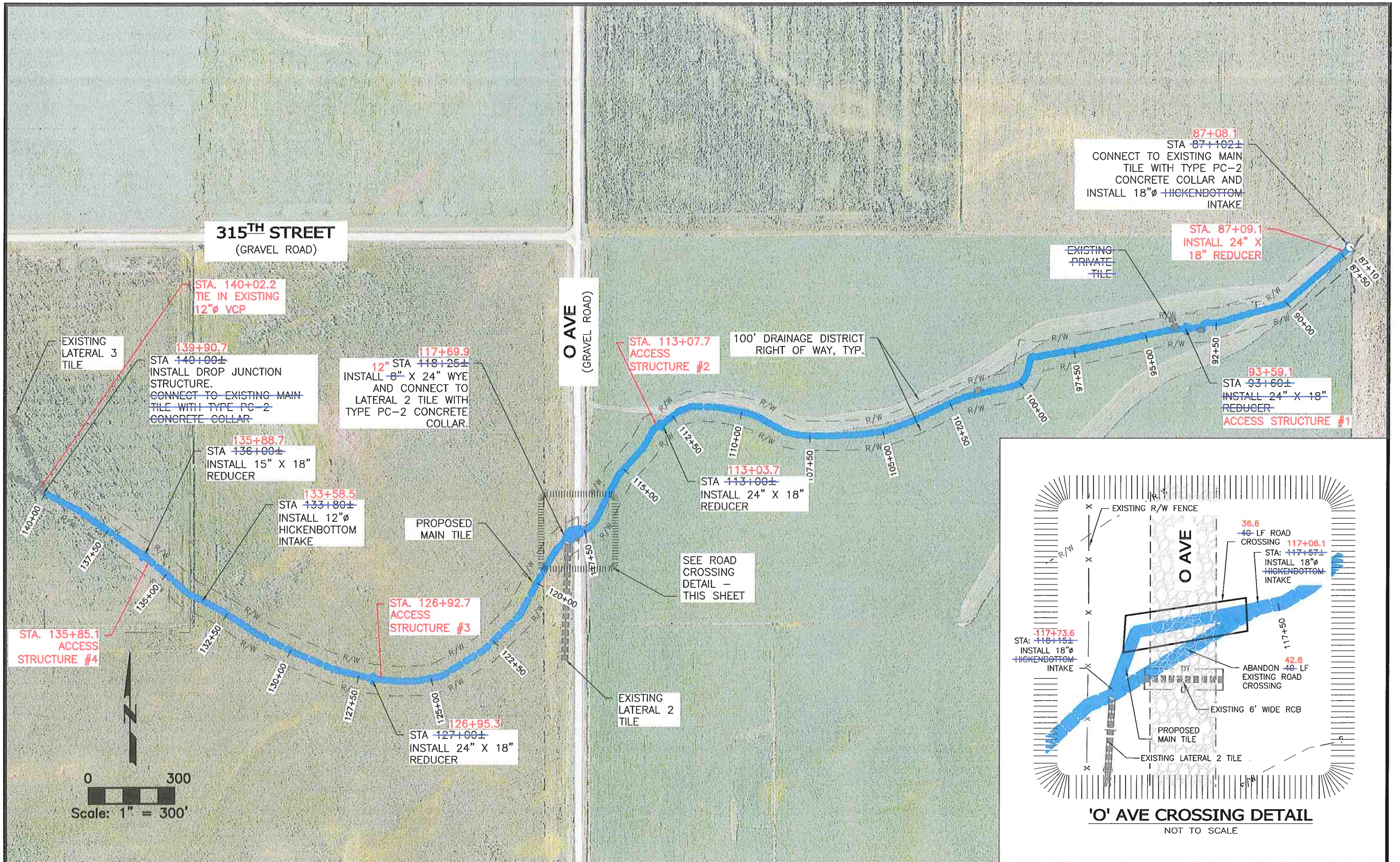
1. During construction, contractor requested to use standard tap tees instead of ADS Insertatees. This resulted in a decrease of \$2,875.00
2. During construction, contractor requested to payment for additional rock bedding and slower construction rates. This resulted in an increase of \$10,000.00
3. During construction, landowners requested that all structures be buried at least 2 feet below ground and only 4 access structures were needed. This resulted in an increase of \$6,875.00
4. There were differences between bid quantities and actual installed quantities in some items. This resulted in a decrease of \$8,710.75

FINAL PROJECT COSTS: - The final project costs for construction (for reference, see final pay estimate included in Appendix B) and engineering (not including repair summaries, reports, or reclassification) are estimated at \$446,931.15 which is approximately \$4,800 above those presented in the above mentioned at the above mentioned hearing. These costs may vary depending upon any damage claims brought forth at the completion hearing. Pending no claims, the costs are as detailed below:

Project Bid by Contractor	\$ 362,801.50
Change tees (Item #1 above)	-\$ 2,875.00
Additional rock (Item #2 above)	+\$ 10,000.00
Changes to access structures (Item #2 above)	+\$ 6,875.00
Decreased Bid Quantities (Item #3 above)	-\$ 8,710.75
<u>Engineering</u>	<u>+\$ 78,840.40</u>
TOTAL PROJECT COST	\$ 446,931.15

The total cost is above those contained in the above mentioned Supplement to Engineer's Report. However, it should be noted that the amount of work by the contractor also exceeded that presented in the above mentioned Supplement to Engineer's Report at the above mentioned hearing (i.e. trench compaction, mandrel testing, and CCTV inspection). It should be noted that the above costs do not include any administrative costs, legal costs, interest on construction warrants, or damage claims.

PENDING ITEMS: - As of the writing of this report, this project is complete in general accordance with the authorized plans and specifications (except the debris/rock as noted above) and lien waivers for suppliers and subcontractors have been submitted by the general contractor (for reference see Appendix C). After the completion hearing, final payment needs to be authorized by the Trustees and the applicable highway authorities should be invoiced for the applicable cost of road crossings. It is my recommendation that the project be accepted. I also recommend that the entire project be walked and reviewed just prior to the expiration of the contract warranty period for any warranty items that may need to be remedied by the contractor. It should be noted that if the Trustees decide to exercise this recommendation, there are no engineering fees included in the above Final Project Costs to cover this service.



DRAWN BY: MAH	APPROVED BY: LOG	REVISIONS:
DATE: 7/25/2017	PROJ. NO.: 6833	
FIELD BK:		
P:\6833\CADD\DESIGN\ASBUILT\6833 - EXCON-EXTENDED ASBUILT.DWG; 6/27/2018		

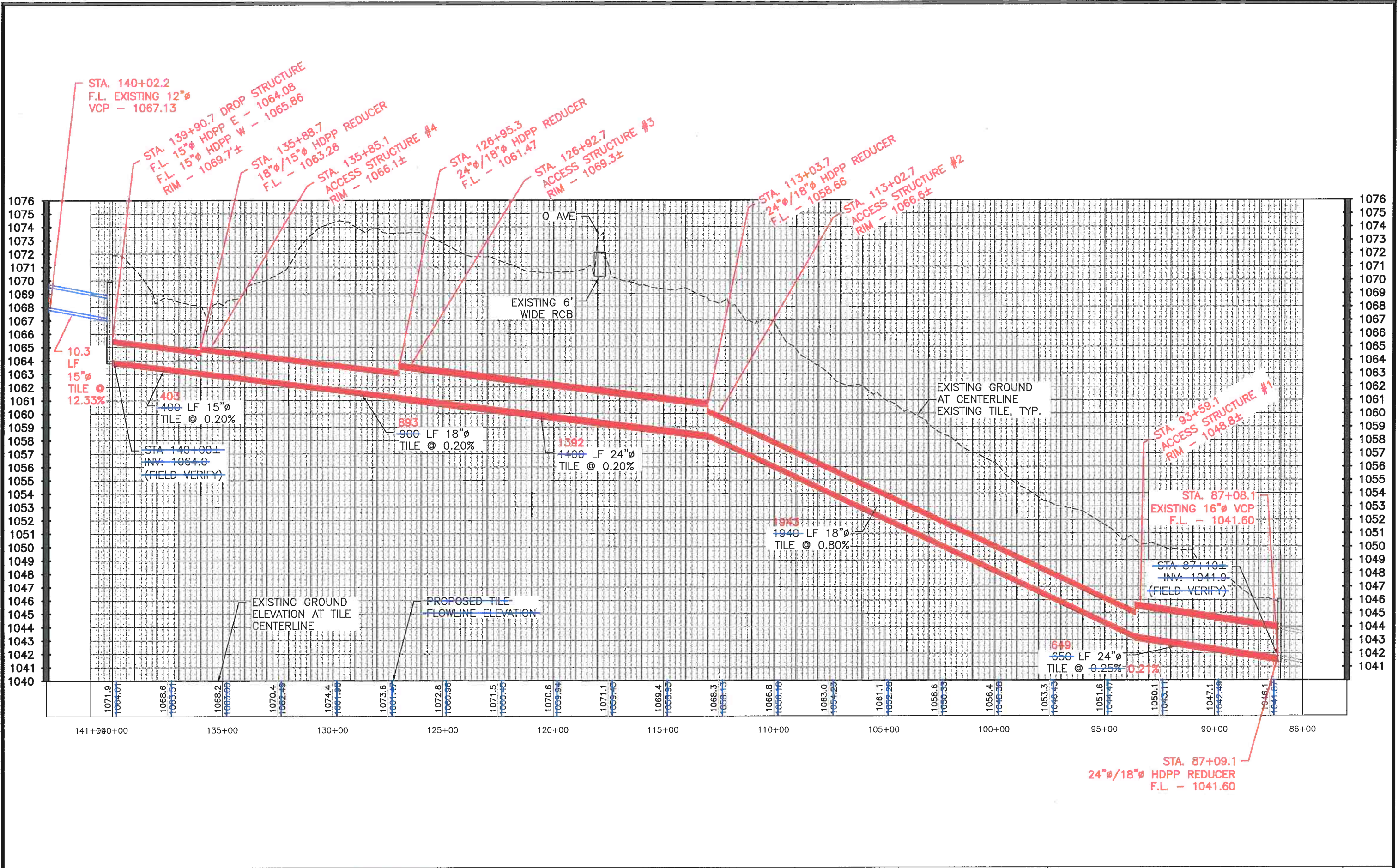
CGA
Clapsaddle-Garber Associates, Inc
Main Office: 16 East Main Street
Marshalltown, Iowa 50158
Ph 641-752-6701
www.cgaconsultants.com

ADDRESS:
**739 PARK AVENUE
ACKLEY, IOWA 50601
PH 641-847-3273 FAX 641-847-2303**

PROJECT:
**DD 72 IMPROVEMENTS TO MAIN TILE
HARDIN COUNTY, IOWA
2017**

SHT. NAME:
MAIN TILE PLAN VIEW - STA 87+10 TO STA 140+00

SHT. NO.:
4 OF 6



DRAWN BY: MAH	APPROVED BY: LOG	REVISIONS:
DATE: 7/25/2017	PROJ. NO.: 6833	
FIELD BK: P:\6833\CADD\DESIGN\ASBUILT\6833 - EXCON-EXTENDED ASBUILT.DWG; 7/6/2018		

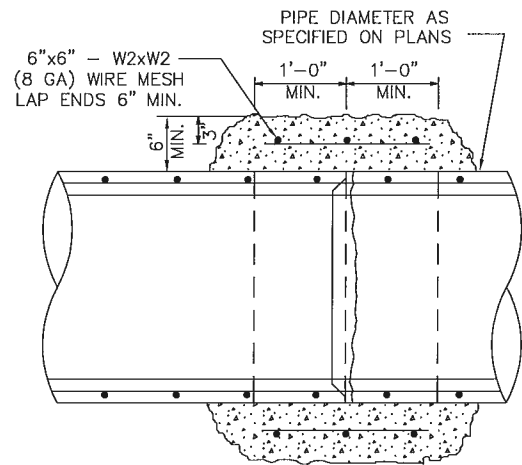
CGA
Clapsaddle-Garber Associates, Inc.
Main Office: 16 East Main Street
Marshalltown, Iowa 50158
Ph 641-752-6701
www.cgaconsultants.com

ADDRESS:
739 PARK AVENUE
ACKLEY, IOWA 50601
PH 641-847-3273 FAX 641-847-2303

PROJECT:
DD 72 IMPROVEMENTS TO MAIN TILE
HARDIN COUNTY, IOWA
2017

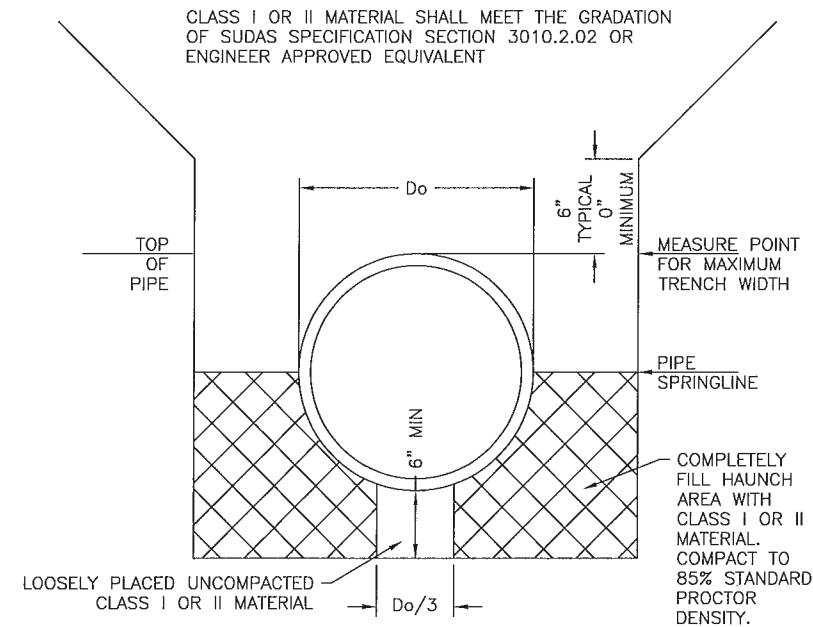
SHT. NAME:
MAIN TILE PROFILE VIEW - STA 87+10 TO STA 140+00

SHT. NO.:
5 OF 6



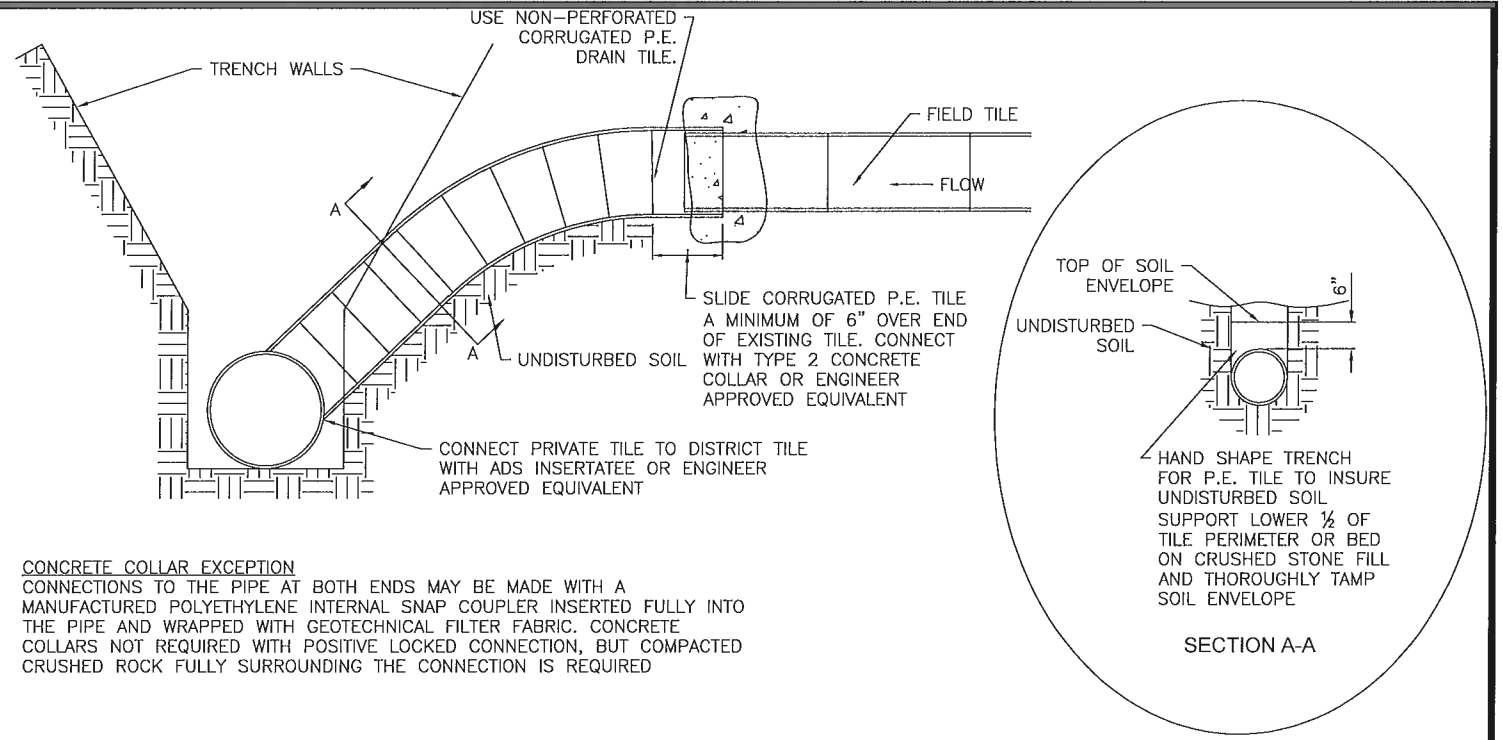
TYPE 2 CONCRETE COLLAR CONNECTION DETAIL
NO SCALE

CONCRETE COLLAR REQUIREMENT
THE OUTER EDGE OF PIPE JOINTS SHALL NOT BE OPENED GREATER THAN 5/16-INCH. IF GREATER THAN 5/16-INCH, A TYPE 2 CONCRETE COLLAR SHALL BE INSTALLED AROUND THE JOINT AT NO ADDITIONAL COST TO THE OWNER



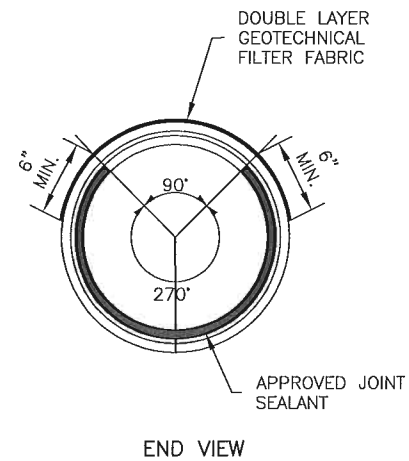
CLASS II MATERIAL BEDDING SHALL BE CONSISTENT WITH THE GRADATION AND OTHER CHARACTERISTICS OF STANDARD AASHTO A1 OR A3 SOIL. A REPRESENTATIVE SAMPLE OF THE MATERIAL AND A GRADATION REPORT OR SUPPLIER'S CERTIFICATION OF COMPLIANCE SHALL BE SUBMITTED TO THE ENGINEER OR APPROVAL PRIOR TO DELIVERY TO SITE.

RCP BEDDING DETAIL
NO SCALE

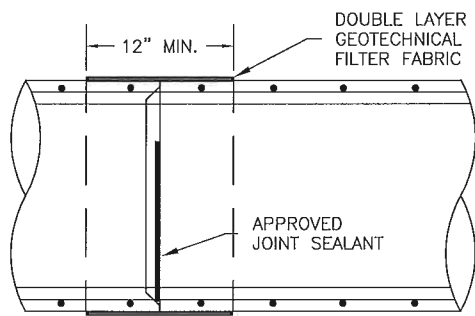


CONCRETE COLLAR EXCEPTION
CONNECTIONS TO THE PIPE AT BOTH ENDS MAY BE MADE WITH A MANUFACTURED POLYETHYLENE INTERNAL SNAP COUPLER INSERTED FULLY INTO THE PIPE AND WRAPPED WITH GEOTECHNICAL FILTER FABRIC. CONCRETE COLLARS NOT REQUIRED WITH POSITIVE LOCKED CONNECTION, BUT COMPACTED CRUSHED ROCK FULLY SURROUNDING THE CONNECTION IS REQUIRED

PRIVATE TILE CONNECTION DETAIL
FOR PRIVATE TILE UP TO 10" DIAMETER
NO SCALE

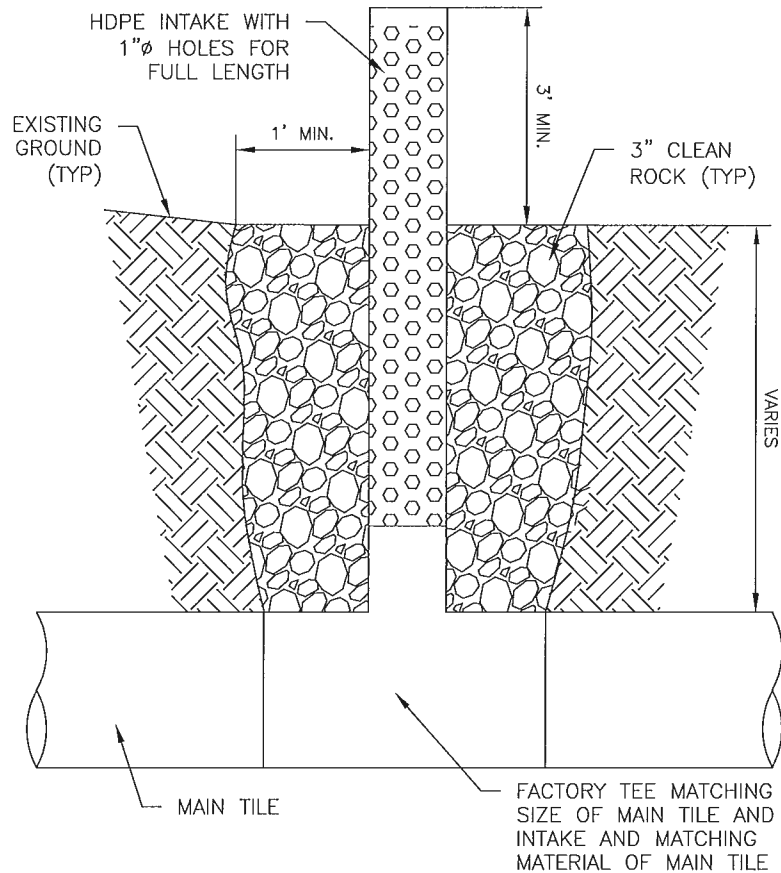


END VIEW



SECTION

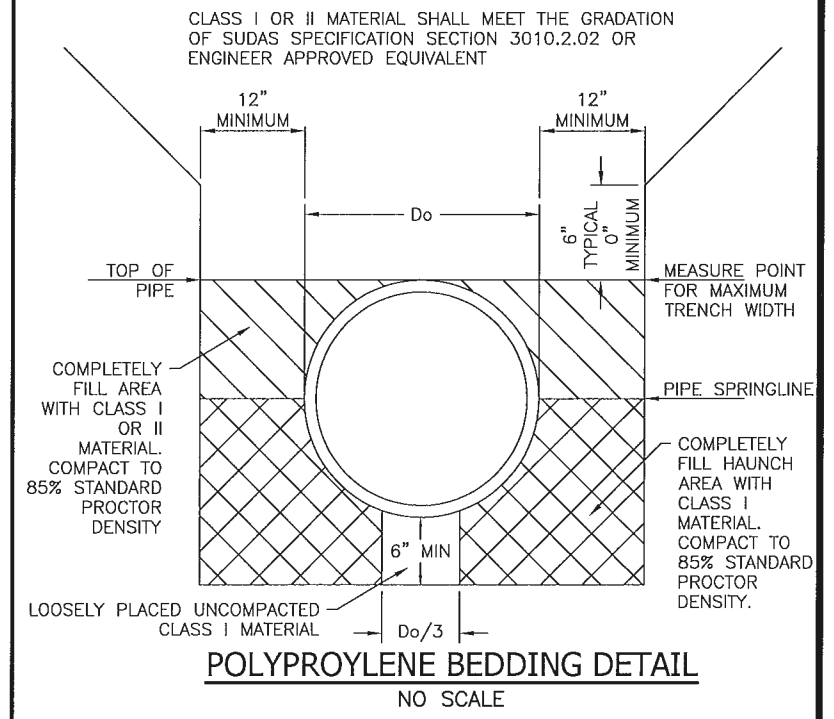
RCP JOINT DETAIL
NO SCALE



HICKENBOTTOM INTAKE DETAIL
NO SCALE

AS BUILT TILE DATA

STA	SIDE	SIZE	MATERIAL	CONNECTION BY	NOTES
87+15.7	R	10"	SW HDPE	18"X24"X24" TEE	
87+73.2	L	5"	SW HDPE	6" TAP TEE	
92+40.6	L	4" AND 6"	SW HDPE	6" TAP TEE	
93+05.3	L	6"	CONCRETE	6" TAP TEE	
94+17.8	R	6"	CONCRETE	6" TAP TEE	
95+29.3	L	6"	VCP	6" TAP TEE	
95+77.2	L	5"	CONCRETE	6" TAP TEE	
98+34	R	4"	VCP	6" TAP TEE	
100+56.1	R	4"	SW HDPE	NOT	PLUGGED
101+19.8	R	4"	SW HDPE	6" TAP TEE	
103+94.8	R	4"	VCP	NOT	FULL OF MUD
107+14.9	L	4"	VCP	NOT	3/4 FULL OF MUD
111+57.6	R	12"	VCP	12"X18"X18" TEE	
112+25.7	R	5"	SW HDPE	6" TAP TEE	
115+50.7	L&R	4"	VCP	NOT	1/2 FULL OF MUD
116+13.8	R	4"	VCP	NOT	1/2 FULL OF MUD
116+35.7	L	4"	VCP	NOT	1/2 FULL OF MUD
117+06.8	L	8"	VCP	8" SPLIT BAND TEE	
117+46.4	L	10"	VCP	NOT	FULL OF MUD
117+69.9	L	8"	VCP	12"X24"X24" TEE	LATERAL 2 TILE
117+74.3	L	6"	VCP	6" TAP TEE	
117+73.1	R	6"	VCP	6" TAP TEE	
118+37.3	R	6"	SW HDPE	6" TAP TEE	
119+34.5	R	5"	VCP	6" TAP TEE	
119+83.2	R	12"	VCP	12" SADDLE TEE	
125+03.7	L	7"	VCP	8" SADDLE TEE	
130+82.5	R	6"	VCP	6" TAP TEE	
132+63.7	L	6"	CONCRETE	6" TAP TEE	
133+56.1	L	8"	SW HDPE	8" SADDLE TEE	
137+55.9	R	4"	SW HDPE	NOT	PLUGGED
138+49.5	L	4"	SW HDPE	6" TAP TEE	
139+54.5	R	7"	VCP	8" SADDLE TEE	



POLYPROPYLENE BEDDING DETAIL
NO SCALE

CLASS II MATERIAL BEDDING SHALL BE CONSISTENT WITH THE GRADATION AND OTHER CHARACTERISTICS OF STANDARD AASHTO A1 OR A3 SOIL. A REPRESENTATIVE SAMPLE OF THE MATERIAL AND A GRADATION REPORT OR SUPPLIER'S CERTIFICATION OF COMPLIANCE SHALL BE SUBMITTED TO THE ENGINEER OR APPROVAL PRIOR TO DELIVERY TO SITE.

PAY ESTIMATE NO. 6 (FINAL)

Improvements to Main Tile DD 72

PROJECT NUMBER 6833

7/3/2018

CONTRACTOR
M D Construction Inc
1322 Hwy E27
Garwin, IA 50632

OWNER
Hardin County Supervisors
Acting as Trustees of DD#72
1215 Edgington Ave., Suite 1
Eldora, Iowa 50627

ENGINEER
Clapsaddle-Garber Associates, Inc
739 Park Avenue
Ackley, Iowa 50601

MAIN PP ALTERNATE BID

Item No.	Description	Estimated Quantity	Unit	Unit Price	Extended Price	
201	24" Ø Polypropylene Tile	2010	LF	1964	\$ 52.00	\$ 102,107.20
202	18" Ø Polypropylene Tile	2840	LF	2834	\$ 44.50	\$ 126,090.75
203	15" Ø Polypropylene Tile	400	LF	414.4	\$ 20.00	\$ 8,288.00
204	24" Ø Polypropylene Tile Road Crossing	40	LF	36.6	\$ 100.00	\$ 3,660.00
205	8" X 24" Polypropylene Wye	1	EA	1	\$ 1,360.00	\$ 1,360.00
206	18" X 24" Polypropylene Eccentric Reducer	3	EA	1	\$ 926.00	\$ 926.00
207	15" X 18" Polypropylene Eccentric Reducer	1	EA	1	\$ 625.00	\$ 625.00
208	Type PC-2 Concrete Collar	3	EA	2	\$ 600.00	\$ 1,200.00
209	Private Tile Connection	23	EA	23	\$ 375.00 *	\$ 8,625.00
210	18" Ø Hickenbottom Intake	3	EA	3	\$ 2,286.00	\$ 6,858.00
211	12" Ø Hickenbottom Intake	1	EA	1	\$ 1,434.00	\$ 1,434.00
212	Drop Junction Structure	1	EA	1	\$ 4,935.00 ^	\$ 4,935.00
213	Road Ditch Grading	4	STA	1	\$ 800.00	\$ 800.00
214	Exploratory Excavation	2	HR	2	\$ 250.00	\$ 500.00
215	Intake Removal	3	EA	1	\$ 250.00	\$ 250.00
216	Tile Removal	5290	LF	5248	\$ 3.00	\$ 15,744.30
217	Tile Abandonment	40	LF	42.9	\$ 65.00	\$ 2,788.50
218	Permanent Seeding	0.2	AC	0.1	\$ 2,400.00	\$ 240.00
219	Seeding Warranty	1	LS	1	\$ 4,000.00	\$ 4,000.00
220	Traffic Control	1	LS	1	\$ 3,750.00	\$ 3,750.00
221	Locate Existing Main Tile	52.9	STA	52.8	\$ 85.00	\$ 4,488.00
222	Mandrel Testing of Tile	5290	LF	5248	\$ 3.00	\$ 15,744.30
223	CCTV Inspection of Tile	5290	LF	5248	\$ 4.00	\$ 20,992.40
224	Trench Compaction	52.9	STA	52.48	\$ 300.00	\$ 15,744.30
225	Mandrel and CCTV Access Point	4	^EA	4	\$ 1,735.00 ^	\$ 6,940.00
226**	Add'l Rock and Slower Construction	1	LS	1	\$ 10,000.00	\$ 10,000.00

I have reviewed the work claimed to be completed by the Contractor as reflected above and recommend payment of **\$ 36,809.08** to the Contractor.

TOTAL WORK COMPLETED TO DATE	\$ 368,090.75
10% RETENTION	\$ -
AMOUNT DUE LESS RETENTION	\$ 368,090.75
PREVIOUSLY PAID	\$ 331,281.68
AMOUNT DUE AT THIS TIME	\$ 36,809.08

Lee Gallentine, Project Engineer

- * - Approved as part of Change Order #1
- ** - Approved as part of Change Order #2
- ^ - Approved as part of Change Order #3



CONTRACTOR'S FINAL RELEASE AND WAIVER OF LIEN

Project/ Owner
 Project: Improvements to Main
Drainage tile District 72
 Address: Hardin County

Contractor / Supplier
 Name: Midwest Pipe Supply, Inc
 Address: 11196 265th St
Clear Lake, IA 50428

Owner: Trustees of Drainage District 72

Contractor Licence: _____
 Contract Date: 1 1

TO ALL WHOM IT MAY CONCERN:

For good and valuable consideration, the receipt and sufficiency of which is hereby acknowledged, the undersigned Contractor hereby waives, discharges, and releases any and all liens, claims, and rights to liens against the above-mentioned project, and any and all other property owned by or the title to which is in the name of the above-referenced Owner and against any and all funds of the Owner appropriated or available for the construction of said project, and any and all warrants drawn upon or issued against any such funds or monies, which the undersigned Contractor may have or may hereafter acquire or possess as a result of the furnishing of labor, materials, and/or equipment, and the performance of Work by the Contractor on or in connection with said project, whether under and pursuant to the above-mentioned contract between the Contractor and the Owner pertaining to said project or otherwise, and which said liens, claims or rights of lien may arise and exist.

The undersigned further hereby acknowledges that the sum of

Dollars (\$ 0⁰⁰) constitutes the entire unpaid balance due the undersigned in connection with said project whether under said contract or otherwise and that the payment of said sum to the Contractor will constitute payment in full and will fully satisfy any and all liens, claims, and demands which the Contractor may have or assert against the Owner in connection with said contract or project.

Dated this 4 day of June 2018
Midwest Pipe Supply, Inc.
 Contractor

Witness to Signature:
Wendy A. Pa...
Officer

By: Burdick
 Title: Officer Manager

CONTRACTOR'S FINAL RELEASE AND WAIVER OF LIEN

Project/ Owner
 Project: Improvements to Main
Drainage File District 72
 Address: Hardin County

Contractor / Supplier
 Name: Farferra
 Address: Maple Grove MN

Owner: Trustees of Drainage District 72

Contractor Licence: _____
 Contract Date: 1 1

TO ALL WHOM IT MAY CONCERN:

For good and valuable consideration, the receipt and sufficiency of which is hereby acknowledged, the undersigned Contractor hereby waives, discharges, and releases any and all liens, claims, and rights to liens against the above-mentioned project, and any and all other property owned by or the title to which is in the name of the above-referenced Owner and against any and all funds of the Owner appropriated or available for the construction of said project, and any and all warrants drawn upon or issued against any such funds or monies, which the undersigned Contractor may have or may hereafter acquire or possess as a result of the furnishing of labor, materials, and/or equipment, and the performance of Work by the Contractor on or in connection with said project, whether under and pursuant to the above-mentioned contract between the Contractor and the Owner pertaining to said project or otherwise, and which said liens, claims or rights of lien may arise and exist.

The undersigned further hereby acknowledges that the sum of

Dollars (\$ 2) constitutes the entire **unpaid** balance due the undersigned in connection with said project whether under said contract or otherwise and that the payment of said sum to the Contractor will constitute payment in full and will fully satisfy any and all liens, claims, and demands which the Contractor may have or assert against the Owner in connection with said contract or project.

Dated this 4 day of June 2018
Farferra

Witness to Signature:
Anne C Coen

Contractor:
 By: [Signature]
 Title: Credit Mgr.

CONTRACTOR'S FINAL RELEASE AND WAIVER OF LIEN

Project/ Owner
 Project: Improvements to Main
Drainage tile District 72
 Address: Hardin County

Contractor / Supplier
 Name: Brown Supply Co
 Address: 23937 South Ave
Ames, IA 50010

Owner: Trustees of Drainage District 72

Contractor Licence: _____
 Contract Date: 1 1

TO ALL WHOM IT MAY CONCERN:

For good and valuable consideration, the receipt and sufficiency of which is hereby acknowledged, the undersigned Contractor hereby waives, discharges, and releases any and all liens, claims, and rights to liens against the above-mentioned project, and any and all other property owned by or the title to which is in the name of the above-referenced Owner and against any and all funds of the Owner appropriated or available for the construction of said project, and any and all warrants drawn upon or issued against any such funds or monies, which the undersigned Contractor may have or may hereafter acquire or possess as a result of the furnishing of labor, materials, and/or equipment, and the performance of Work by the Contractor on or in connection with said project, whether under and pursuant to the above-mentioned contract between the Contractor and the Owner pertaining to said project or otherwise, and which said liens, claims or rights of lien may arise and exist.

The undersigned further hereby acknowledges that the sum of

Dollars (\$ _____) constitutes the entire **unpaid** balance due the undersigned in connection with said project whether under said contract or otherwise and that the payment of said sum to the Contractor will constitute payment in full and will fully satisfy any and all liens, claims, and demands which the Contractor may have or assert against the Owner in connection with said contract or project.

Dated this 9th day of May 2018
Brown Supply Co
 Contractor

Witness to Signature:
Dan A. Decker
5-9-18

By: _____
 Title: President

CONTRACTOR'S FINAL RELEASE AND WAIVER OF LIEN

Project/ Owner
 Project: Improve streets to Main
Warragee Fire District 72
 Address: Hudson County

Contractor / Supplier
 Name: Concrete Inc.
 Address: 1710 E. Main St

Owner: Trustees of Warragee District 72

Contractor Licence: _____
 Contract Date: 1 / 1

TO ALL WHOM IT MAY CONCERN:

For good and valuable consideration, the receipt and sufficiency of which is hereby acknowledged, the undersigned Contractor hereby waives, discharges, and releases any and all liens, claims, and rights to liens against the above-mentioned project, and any and all other property owned by or the title to which is in the name of the above-referenced Owner and against any and all funds of the Owner appropriated or available for the construction of said project, and any and all warrants drawn upon or issued against any such funds or monies, which the undersigned Contractor may have or may hereafter acquire or possess as a result of the furnishing of labor, materials, and/or equipment, and the performance of Work by the Contractor on or in connection with said project, whether under and pursuant to the above-mentioned contract between the Contractor and the Owner pertaining to said project or otherwise, and which said liens, claims or rights of lien may arise and exist.

The undersigned further hereby acknowledges that the sum of one thousand three hundred twenty-seven and ⁰²/₁₀₀ Dollars (\$ 1327.02) constitutes the entire unpaid balance due the undersigned in connection with said project whether under said contract or otherwise and that the payment of said sum to the Contractor will constitute payment in full and will fully satisfy any and all liens, claims, and demands which the Contractor may have or assert against the Owner in connection with said contract or project.

Dated this 4th day of June 2018

Witness to Signature:
[Signature]

Concrete Inc.
 Contractor
 By: [Signature]
 Title: Manager

CONTRACTOR'S FINAL RELEASE AND WAIVER OF LIEN

Project/ Owner
Project: Improvements to Main
Drainage & Lake District 72
Address: Hardin County

Owner: Trustees of Drainage District 72

Contractor / Supplier
Name: Behrke Quarries Inc

Address: 28614 Co Hwy 562
Union, IA 50398

Contractor Licence: _____
Contract Date: 1 1

TO ALL WHOM IT MAY CONCERN:

For good and valuable consideration, the receipt and sufficiency of which is hereby acknowledged, the undersigned Contractor hereby waives, discharges, and releases any and all liens, claims, and rights to liens against the above-mentioned project, and any and all other property owned by or the title to which is in the name of the above-referenced Owner and against any and all funds of the Owner appropriated or available for the construction of said project, and any and all warrants drawn upon or issued against any such funds or monies, which the undersigned Contractor may have or may hereafter acquire or possess as a result of the furnishing of labor, materials, and/or equipment, and the performance of Work by the Contractor on or in connection with said project, whether under and pursuant to the above-mentioned contract between the Contractor and the Owner pertaining to said project or otherwise, and which said liens, claims or rights of lien may arise and exist.

The undersigned further hereby acknowledges that the sum of Forty Thousand Eight Hundred Thirty Six Thousand and Subseven cents Dollars (\$40,836.47) constitutes the entire unpaid balance due the undersigned in connection with said project whether under said contract or otherwise and that the payment of said sum to the Contractor will constitute payment in full and will fully satisfy any and all liens, claims, and demands which the Contractor may have or assert against the Owner in connection with said contract or project.

Witness to Signature:
Ram Schwack

Dated this 6th day of June 2018
Behrke Quarries Inc
Contractor

By: David Palmer
Title: Secretary

CONTRACTOR'S FINAL RELEASE AND WAIVER OF LIEN

Project/ Owner
Project: Improvements to Main
Drainage Tile District 72
Address: Hardin County

Contractor / Supplier
Name: _____
Address: _____

Owner: Trustees of Drainage District 72

Contractor Licence: _____
Contract Date: / /

TO ALL WHOM IT MAY CONCERN:

For good and valuable consideration, the receipt and sufficiency of which is hereby acknowledged, the undersigned Contractor hereby waives, discharges, and releases any and all liens, claims, and rights to liens against the above-mentioned project, and any and all other property owned by or the title to which is in the name of the above-referenced Owner and against any and all funds of the Owner appropriated or available for the construction of said project, and any and all warrants drawn upon or issued against any such funds or monies, which the undersigned Contractor may have or may hereafter acquire or possess as a result of the furnishing of labor, materials, and/or equipment, and the performance of Work by the Contractor on or in connection with said project, whether under and pursuant to the above-mentioned contract between the Contractor and the Owner pertaining to said project or otherwise, and which said liens, claims or rights of lien may arise and exist.

The undersigned further hereby acknowledges that the sum of _____ Dollars (\$ _____) constitutes the entire **unpaid** balance due the undersigned in connection with said project whether under said contract or otherwise and that the payment of said sum to the Contractor will constitute payment in full and will fully satisfy any and all liens, claims, and demands which the Contractor may have or assert against the Owner in connection with said contract or project.

Dated this 1 day of June 20 18

TEAM Services, Inc.
Contractor

Witness to Signature:
San Spencer 6-1-18

By: [Signature]
Title: President

CONTRACTOR'S FINAL RELEASE AND WAIVER OF LIEN

Project/ Owner
 Project: Improvements to Main
Drainage File District 72
 Address: Hardin County

Contractor / Supplier
 Name: _____
 Address: _____

Owner: Trustees of Drainage District 72

Contractor Licence: _____
 Contract Date: 1 / 1

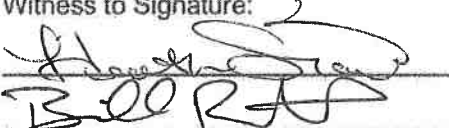
TO ALL WHOM IT MAY CONCERN:

For good and valuable consideration, the receipt and sufficiency of which is hereby acknowledged, the undersigned Contractor hereby waives, discharges, and releases any and all liens, claims, and rights to liens against the above-mentioned project, and any and all other property owned by or the title to which is in the name of the above-referenced Owner and against any and all funds of the Owner appropriated or available for the construction of said project, and any and all warrants drawn upon or issued against any such funds or monies, which the undersigned Contractor may have or may hereafter acquire or possess as a result of the furnishing of labor, materials, and/or equipment, and the performance of Work by the Contractor on or in connection with said project, whether under and pursuant to the above-mentioned contract between the Contractor and the Owner pertaining to said project or otherwise, and which said liens, claims or rights of lien may arise and exist.

The undersigned further hereby acknowledges that the sum of

Dollars (\$ 1898.90) constitutes the entire **unpaid** balance due the undersigned in connection with said project whether under said contract or otherwise and that the payment of said sum to the Contractor will constitute payment in full and will fully satisfy any and all liens, claims, and demands which the Contractor may have or assert against the Owner in connection with said contract or project.

Dated this 20 day of 6 2018

Witness to Signature:

BORJA

 Contractor
 By: David C. Ditt
 Title: Pres.



Drainage Work Order Request For Repair

Hardin County

Date: 7/3/2018

Work Order #: WO00000215

Drainage District: Drainage Districts \DD 52 (51078)

Sec-Twp-Rge: 33-87-21 **Qtr Sec:** NE

Location/GIS: 87-21-33-276-004

Requested By: Tracy Below

Contact Phone: (641) 485-3396

Contact Email: _____

Landowner (if different): Piel Manufacturing Co

Description: DD 52 Lat 3 - Tracy Below spoke with County Engineer, Taylor Roll, that water is boiling out of the intake west of apartments. The area is under water and he is losing his hay crop. Please call him with updates and keep him in the loop.

Repair labor, materials and equipment: _____

Repaired By: _____ **Date:** _____

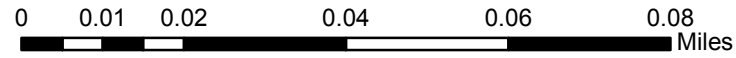
Please reference work order # and send statement for services to:
Hardin County Auditor's Office
Attn: Drainage Clerk
1215 Edgington Ave, Suite 1
Eldora, IA 50627
Phone (641) 939-8111
Fax (641) 939-8245

For Office Use Only

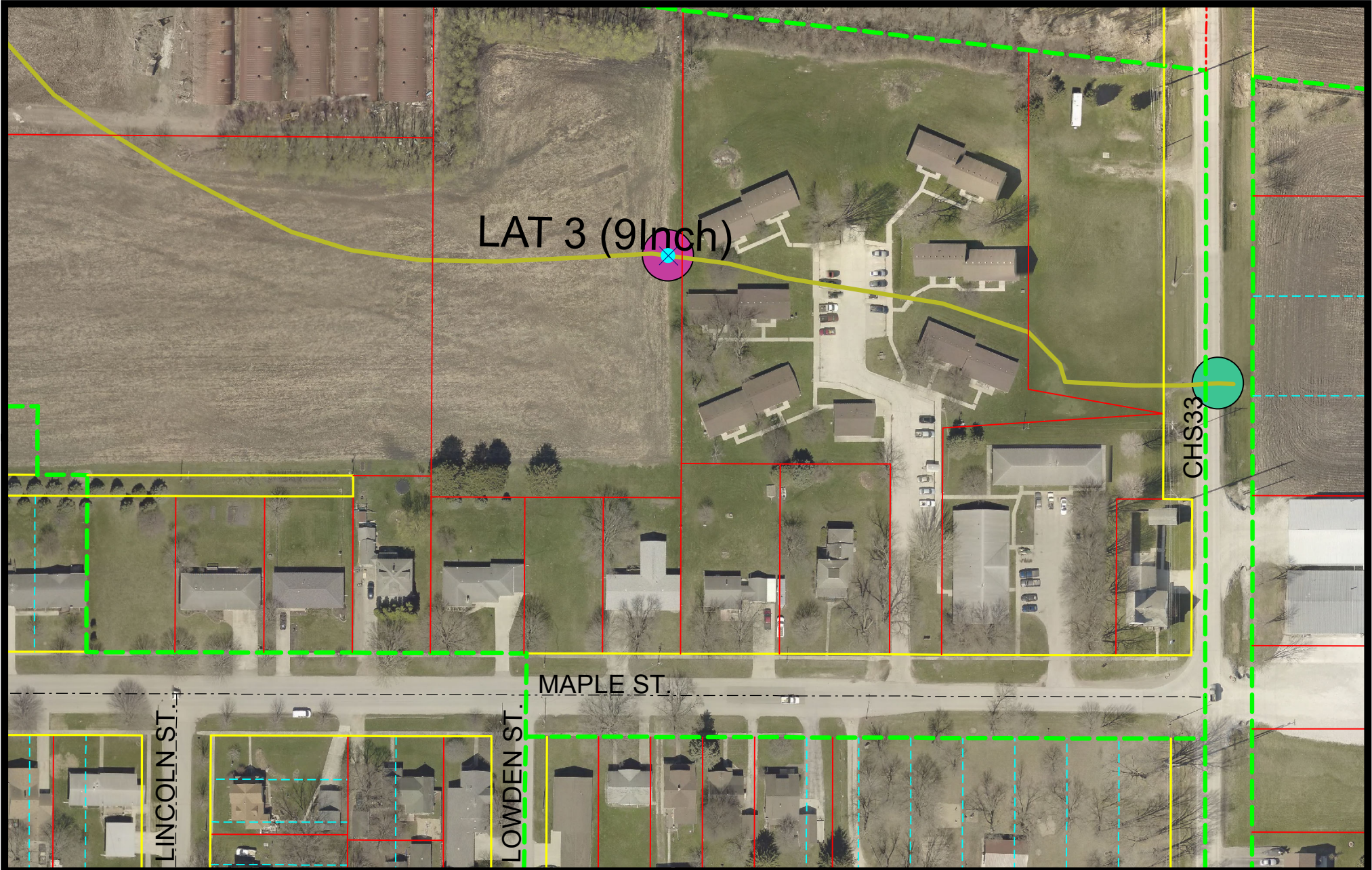
Approved: _____ **Date:** _____



Hardin County Auditor's Office



Date: 7/3/2018



The Data is provided "as is" without warranty or any representation of accuracy, timeliness or completeness. The burden for determining accuracy, completeness, timeliness, merchantability and fitness for or the appropriateness for use rests solely on the requester. Hardin County makes no warranties, express or implied is to the use of the Data. There are no implied warranties of merchantability or fitness for a particular purpose. The requester acknowledges and accepts the limitations of the Data, including the fact that the Data is dynamic and is in a constant state of maintenance, correction and update. Cadastral Data represents land ownership, but does not define it. This Data does not replace a legal survey.

**DRAINAGE DISTRICT 143
MINUTES**

June 14, 2017

DD 143 – McDowell requested payment minus seeding warranty to be paid for the project with the Radcliffe Golf Course. It was discussed that there are three locations where water is ponding, two west of the golf cart path and one east of the path. McDowell stated he consulted with Chris at the NRCS if an erosion control mat would help and it was possible, but not certain. McDowell further explained that he could add dirt, seed and the control mat but couldn't guarantee that it will take because the area is so flat. Granzow stated that the ponding is there because the path is too high, so why would the expense to fix the area be the responsibility of the drainage district. The solution of intakes was discussed, but Granzow again explained that it would need to be between McDowell's and the golf course. Wykle explained that it did not pond at this area before and they were told the golf course would look just as it did before the project, so didn't understand why they would be responsible for fixing it. McDowell offered a compromise with Wykle. McDowell & Sons would install the intakes at no charge and will level the area if the golf course does the rest of the seeding. Wykle stated he would be okay with that but needs to approve it with his board first. It was discussed that the intake installation would only take a day and the seeding would probably be done after Labor Day. The Trustees agreed that the intakes will be the property of the golf course and it will be their responsibility to maintain it, not the districts.



Drainage Work Order Request For Repair

Hardin County

Date: 4/27/2018

Work Order #: WO00000209

Drainage District: Drainage Districts \DD 25

Sec-Twp-Rge: 27-86-22 Qtr Sec: NW

Location/GIS: 86-22-27-100-004

Requested By: Leland Coburn

Contact Phone: (515) 291-0453

Contact Email: _____

Landowner (if different): _____

Description: Blowout on Lateral 3 tile just NW of windmill & west of the RR. Was just planted. Leland would like a call when they come out. Has spoken with Kent Hall & he is familiar with the area & available to fix. (This may be included in the current proj WO 1.)

Repair labor, materials and equipment: _____

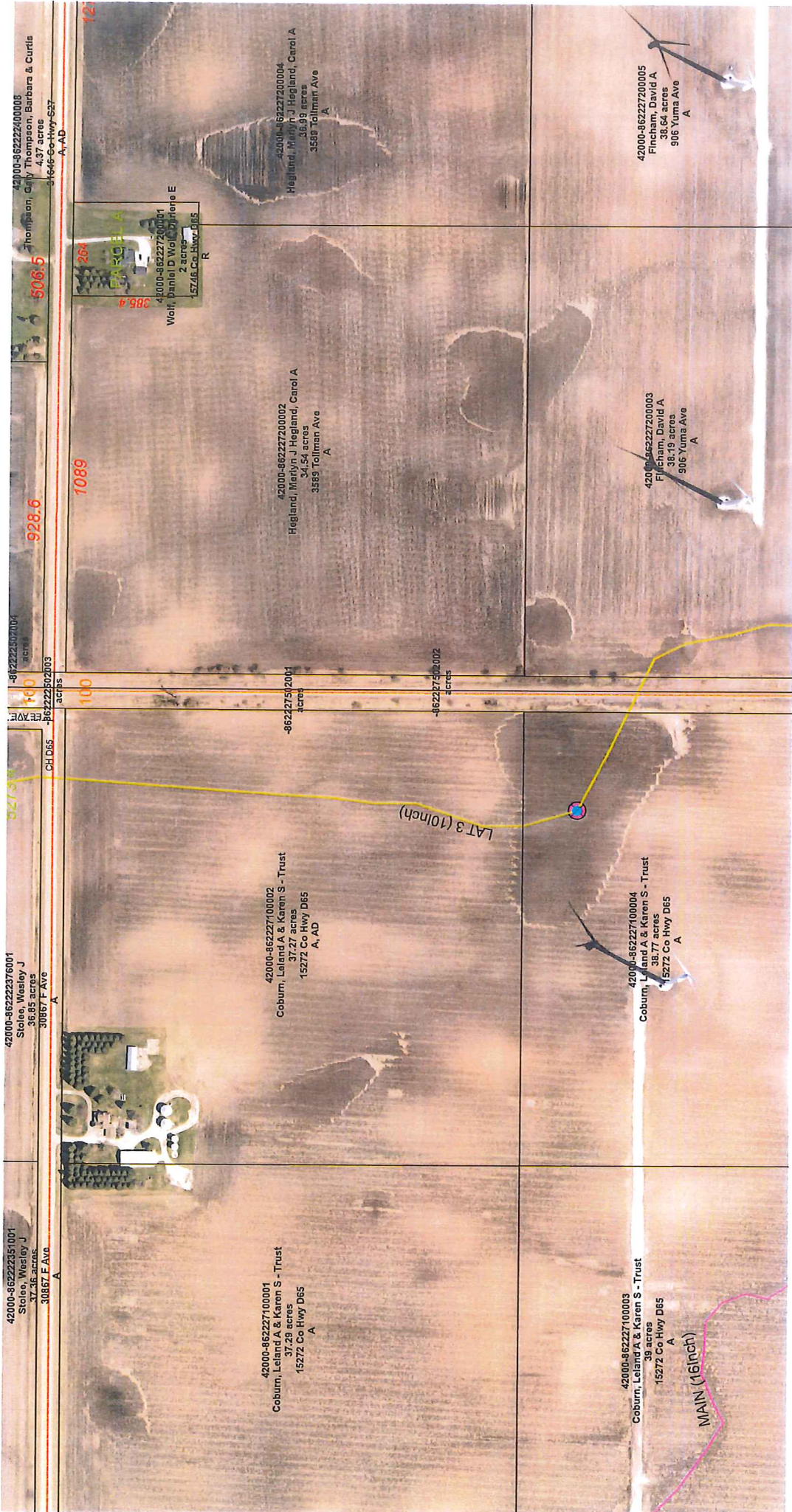
Repaired By: _____ Date: _____

Please reference work order # and send statement for services to:

Hardin County Auditor's Office
Attn: Drainage Clerk
1215 Edgington Ave, Suite 1
Eldora, IA 50627
Phone (641) 939-8111
Fax (641) 939-8245

For Office Use Only

Approved: _____ Date: _____



42000-86222351001
Stiles, Wesley J
38.85 acres
30867 F Ave
A

42000-86222376001
Stiles, Wesley J
38.85 acres
30867 F Ave
A

86222507004
acres
100
acres
86222507003

928.6

42000-86222400005
Thompson, Carly Thompson, Barbara & Curtis
4.37 acres
31646 Co Hwy 627
A, AD

42000-862227100001
Coburn, Leland A & Karen S - Trust
37.29 acres
15272 Co Hwy D65
A

42000-862227100002
Coburn, Leland A & Karen S - Trust
37.27 acres
15272 Co Hwy D65
A, AD

42000-862227200002
Hegland, Marilyn J Hegland, Carol A
34.54 acres
3589 Tollman Ave
A

42000-862227200001
Wolf, Daniel D Wolf, Darlene E
2 acres
152746 Co Hwy D65
R

42000-862227200004
Hegland, Marilyn J Hegland, Carol A
36.99 acres
3589 Tollman Ave
A

42000-862227100003
Coburn, Leland A & Karen S - Trust
38.79 acres
15272 Co Hwy D65
A

42000-862227100004
Coburn, Leland A & Karen S - Trust
38.77 acres
15272 Co Hwy D65
A

42000-862227200003
Fincham, David A
38.64 acres
906 Yuma Ave
A

42000-862227200005
Fincham, David A
38.64 acres
906 Yuma Ave
A

LAT 3 (10inch)

MAIN (16inch)

Drainage District:

#25

Investigation Summary:

- Landowner in NW¼ Section 27, Township 86 North, Range 22 West reported blowout on Lateral 3 tile on the west side of the railroad right of way.
- Visual observation found a 4' diameter sinkhole/blowout upstream of the broken intake in area of ponding in the field upstream of said railroad. Sinkhole/blowout is partially filled with water and contains two collapsed or partially collapses 10" VCP tiles (one above the other, one of which assumed to be Lat 3 tile.).
- On the upper tile, running locator cable upstream from the sinkhole revealed an obstruction, believed to be soil. The downstream direction was found to be open.
- On the lower tile, running locator cable upstream from the sinkhole found the tile to be open. Running downstream revealed an obstruction, believed to be collapsed tile.

Contractor Time and Materials (spent while CGA was on-site):

None as only visual observation was performed.

Additional Actions Recommended:

Although it is unclear which tile in the sinkhole/blowout is district tile, the sinkhole/blowout is only 50' upstream of the end of the project currently under contract. Therefore, it is recommended that the length of tile to be replaced as part of the project be expanded by 70' and the tile in the sinkhole/blowout repaired at the same time.

It should also be noted that visual observation found a 6' diameter x 1½' deep depression in railroad berm and a 1' diameter x ½' deep depression in railroad ballast rock. Both are on district tile route as part of the project currently under contract.



CONSTRUCTION ENGINEERING
OBSERVATION REPORT

DATE:

5/11/18

PROJECT NUMBER:

6501 5

DAYS OF WEEK:

S | M | T | W | T | **F** | S

COUNTY, ROUTE, ROAD:

DD 25

SHEET NO.

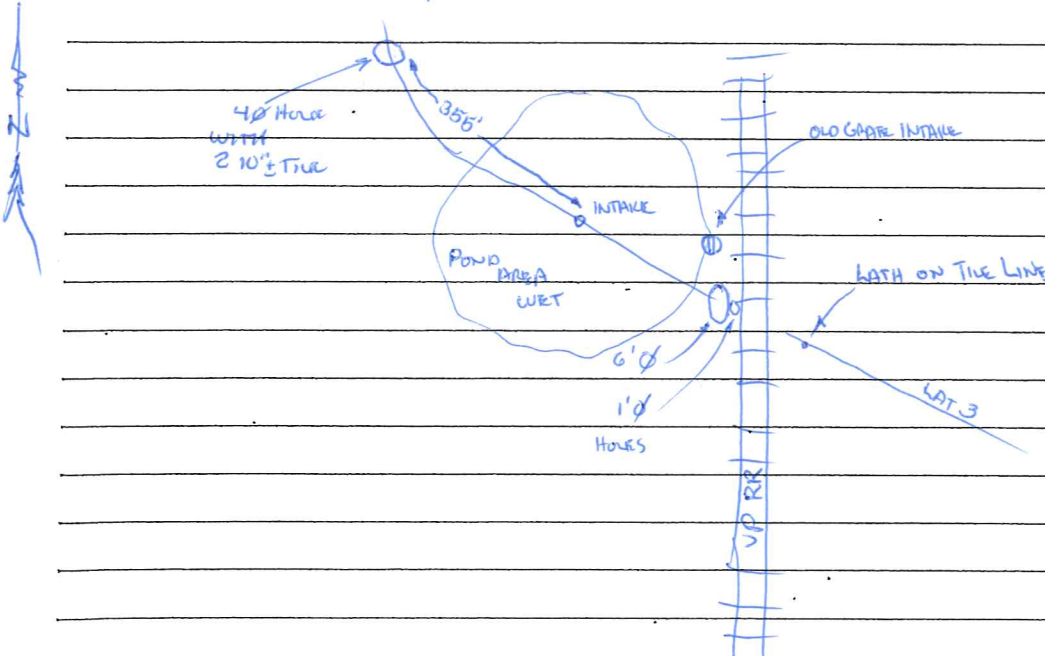
1 OF 1

LOCATION:

S. GARDEN CITY, W. V.P.R.R.

DESCRIPTION OF WORK AND MATERIAL USED FOR EACH OPERATION, INCLUDING CONTRACTOR/SUB NAME, ITEM NO. AND LOCATION

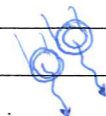
Party Sunny, 65°, Very Windy From EAST, RAIN EARLY
Drove To WET POND AREA WITH INTAKE, USED WIND TOWER ROAD, THEN
WALKED TO INTAKE, SINK HOLE ON SIDE OF INTAKE, INTAKE IS FULL OF WATER.
WALKED DOWN TIE ROUTE TO SE @ W. SIDE RR BEAM, FOUND 6' Ø x 1 1/2'
DEEP DEPRESSION IN BEAM, ALSO FOUND 1' Ø x 1/2' DEEP DEPRESSION IN
BALLAST ROCK @ TIES ON W. SIDE RAIL. TIE MUST BE 90% PLUGGED OR MORE WITH
RR BALLAST ROCK. INTAKE IN SINK IS INSIDE OF FUTURE RECON PROJECT.
CALL LELAND COBURN, LET MESSAGE.



TALKED TO LELAND, HE SAID ANOTHER HOLE TO N. OF INTAKE, FOUND HOLE 355' NW.

PROBLEM IS UNDER RR TRACKS

IT HAS 2 10" TIE STAKED ON TOP OF EACH OTHER 3' DEEP, BOTH RUNNING.



TOP TIE IS COLLAPSED
BOTTOM TIE IS PARTIALLY COLLAPSED

I Certify that the work described in this report was incorporated into this contract unless otherwise noted.

Observer's Signature:

[Handwritten Signature]

Date Prepared:

5/11/18

Reviewed by:

Engineer

Date Reviewed

Rock Settlement in Breast



SETTLEMENT N RR BERM



LOOKING UPSTREAM



Looking Downstream



INTAKE IN POND



OLD CRATE INTAKE



CONSTRUCTION ENGINEERING
OBSERVATION REPORT

DATE:

5/17/18

PROJECT NUMBER:

6501.5

DAYS OF WEEK:

S | M | T | W | T | F | S

COUNTY, ROUTE, ROAD:

00 25

SHEET NO.

1 OF 1

LOCATION:

S. Garden City, W. UPRR

DESCRIPTION OF WORK AND MATERIAL USED FOR EACH OPERATION, INCLUDING CONTRACTOR/SUB NAME, ITEM NO. AND LOCATION

Sunny, calm 85°, drying conditions

Tile is running 3/4 full

Armed @ Co. Monument 8011 set up

(125-131) Low Tile

10" Tile 118

116

Full of mud

(121-124) Full of mud

Low tile can't get in collapsed

High 10" tile 113

High 10" tile (117-120)



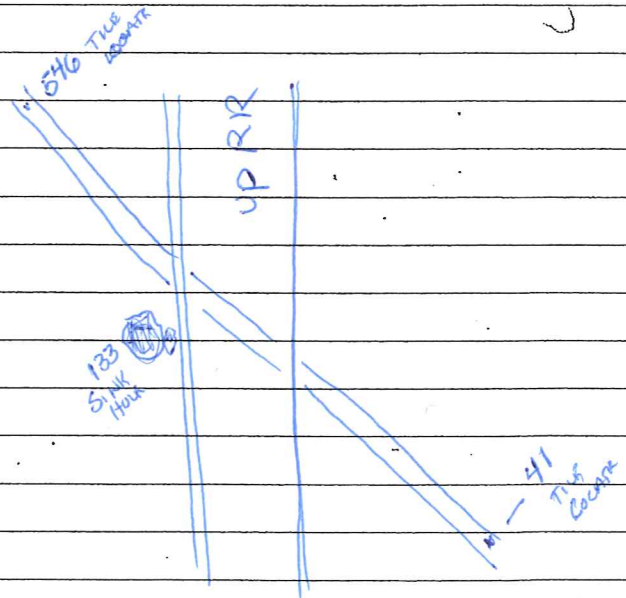
LOCATED TILE WITH CABLE

10" TILE (HIGHER TILE) UPSTREAM HAS MUD

10" DOWNSTREAM IS OPEN (HIGHER TILE)

10" TILE (LOWER TILE IS OPEN UPSTREAM)

10" TILE (LOWER TILE IS COLLAPSED DOWNSTREAM)



I Certify that the work described in this report was incorporated into this contract unless otherwise noted.

Observer's Signature:

[Handwritten Signature]

Date Prepared:

5/17/18

Reviewed by:

Engineer

Date Reviewed

6501 DD25 5-17-18RB

113,3548774.972,4949252.686,1173.857, TOP CLAY10"
114,3548773.832,4949252.716,1172.922, FL CLAY10"
115,3548774.290,4949251.485,1172.125, FL CLAY10"
116,3548774.468,4949251.638,1172.997, TOP CLAY10"
117,3548764.726,4949251.280,1176.692, GS HIGH TILELOCATE
118,3548738.374,4949246.471,1176.668, GS HIGH TILELOCATE
119,3548702.185,4949236.360,1176.417, GS HIGH TILELOCATE
120,3548658.861,4949228.161,1176.193, GS HIGH TILELOCATE
121,3548777.893,4949253.596,1176.710, GS HIGH TILELOCATE
122,3548781.175,4949254.039,1176.772, GS HIGH TILELOCATE
123,3548790.912,4949257.286,1176.729, GS HIGH TILELOCATE
124,3548802.127,4949261.229,1176.876, GS HIGH TILELOCATE
125,3548780.617,4949252.459,1176.592, GS LOW TILELOCATE
126,3548791.540,4949254.849,1176.883, GS LOW TILELOCATE
127,3548813.703,4949264.244,1177.130, GS LOW TILELOCATE
128,3548827.140,4949270.764,1176.931, GS LOW TILELOCATE
129,3548856.419,4949281.948,1177.057, GS LOW TILELOCATE
130,3548886.383,4949298.404,1177.355, GS LOW TILELOCATE
131,3548918.851,4949316.218,1177.523, GS LOW TILELOCATE
132,3548257.577,4949583.342,1174.851, SINK HOLE INBALAST
133,3548258.145,4949589.613,1177.439, SINK HOLE INBALAST



Drainage Work Order Request For Repair Hardin County

Date: 4/2/2018

Work Order #: WO00000206

Drainage District: Drainage Districts \DD 34

Sec-Twp-Rge: 20-86-22 **Qtr Sec:** SE SW

Location/GIS: 86-22-20-300-005

Requested By: Craig Johnson

Contact Phone: (515) 290-9706

Contact Email: _____

Landowner (if different): _____

Description:

It appears a tile was possibly not hooked up during the construction of the open ditch. There's a very wet spot located on the east side of the ditch just north of the road on the "bend".

Repair labor, materials and equipment: _____

Repaired By: _____ **Date:** _____

Please reference work order # and send statement for services to:

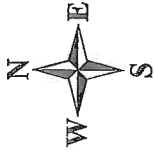
Hardin County Auditor's Office
Attn: Drainage Clerk
1215 Edgington Ave, Suite 1
Eldora, IA 50627
Phone (641) 939-8111
Fax (641) 939-8245

For Office Use Only

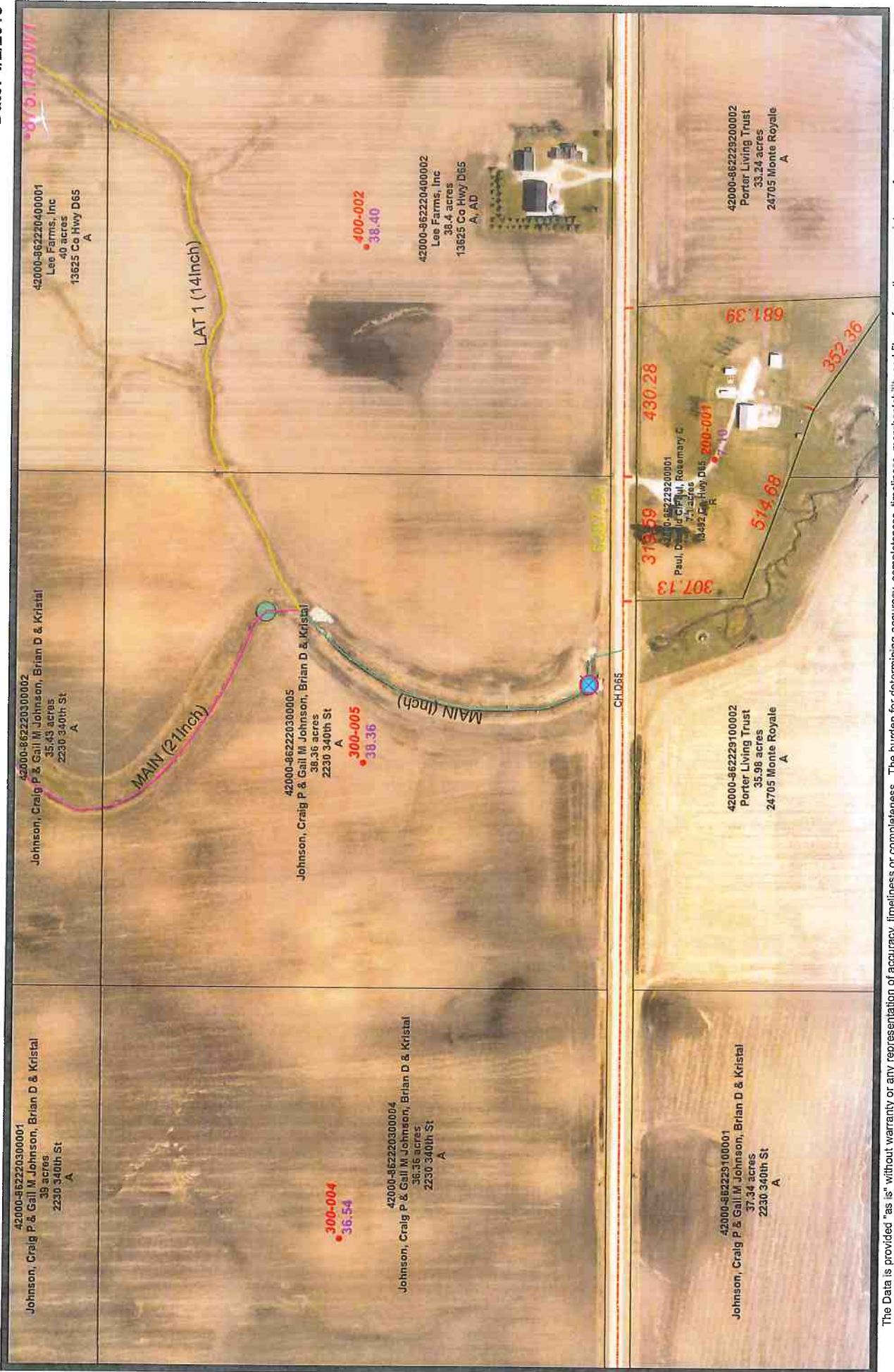
Approved: _____ **Date:** _____



Hardin County Auditor's Office



Date: 4/2/2018



The Data is provided "as is" without warranty or any representation of accuracy, timeliness or completeness. The burden for determining accuracy, completeness, timeliness, merchantability and fitness for use rests solely on the requester. Hardin County makes no warranties, express or implied, as to the use of the Data. There are no implied warranties of merchantability or fitness for a particular purpose. The requester acknowledges and accepts the limitations of the Data, including the fact that the Data is dynamic and is in a constant state of maintenance, correction and update. Cadastral Data represents land ownership, but does not define it. This Data does not represent a legal survey.

Drainage District:

34

Investigation Summary:

- Landowner located in SE¼ SW¼ of Section 20, Township 86 North, Range 22 West reported wet spots on east bank (indicating possible private tile that did not get outleted) along newly constructed main open ditch.
- Visually searched area and found following potential issues along main open ditch that may need attention:
 1. There is a 150'± x 20'± spot on the east side of the main open ditch that appears to be wetter than surrounding ground area, but no water is coming out of ground.
 2. Near north end of the main open ditch, there is a 50 feet long area on the west ditch bank that may be the start of a sluff.
 3. Near north end of the main open ditch, there are some grass islands in the flowline of the main open ditch.
 4. The clay tile that runs under County Highway D65 is partially collapsed.
 5. The concrete tile that runs under County Highway D65 is misaligned and is eroding soil.
 6. Approximately 5 cubic yards of concrete bank armor on the north side of County Highway D65 just east of the culvert has started to settle.
 7. A sand bar on the south side of County Highway D65 which is half as high as the flowline of the existing tiles has started to form.

Contractor Time and Materials (spent while CGA was on-site):

None as only a visual observation was performed.

Additional Actions Recommended:

The following are our recommendations relative to the above:

- It is not obvious that there is a unoutleted tile at the wet spot identified in 1 above. The only way to know for sure would be to excavate area with backhoe.
- The slough area identified in 2 above should be monitored to see if it worsens. If it does, the sluff area should be repaired.
- The grass islands identified in 3 above should be monitored to see if they worsen. If they do, they should be removed.
- Items 4 through 7 identified above should be reviewed after the Secondary Roads Department removes the tiles and install the box culvert. If any of these items are still in existence after that, then they should be addressed.



CONSTRUCTION ENGINEERING
OBSERVATION REPORT

DATE:

4/17/18

PROJECT NUMBER:

64282

COUNTY, ROUTE, ROAD:

DD 34

LOCATION:

DAYS OF WEEK:

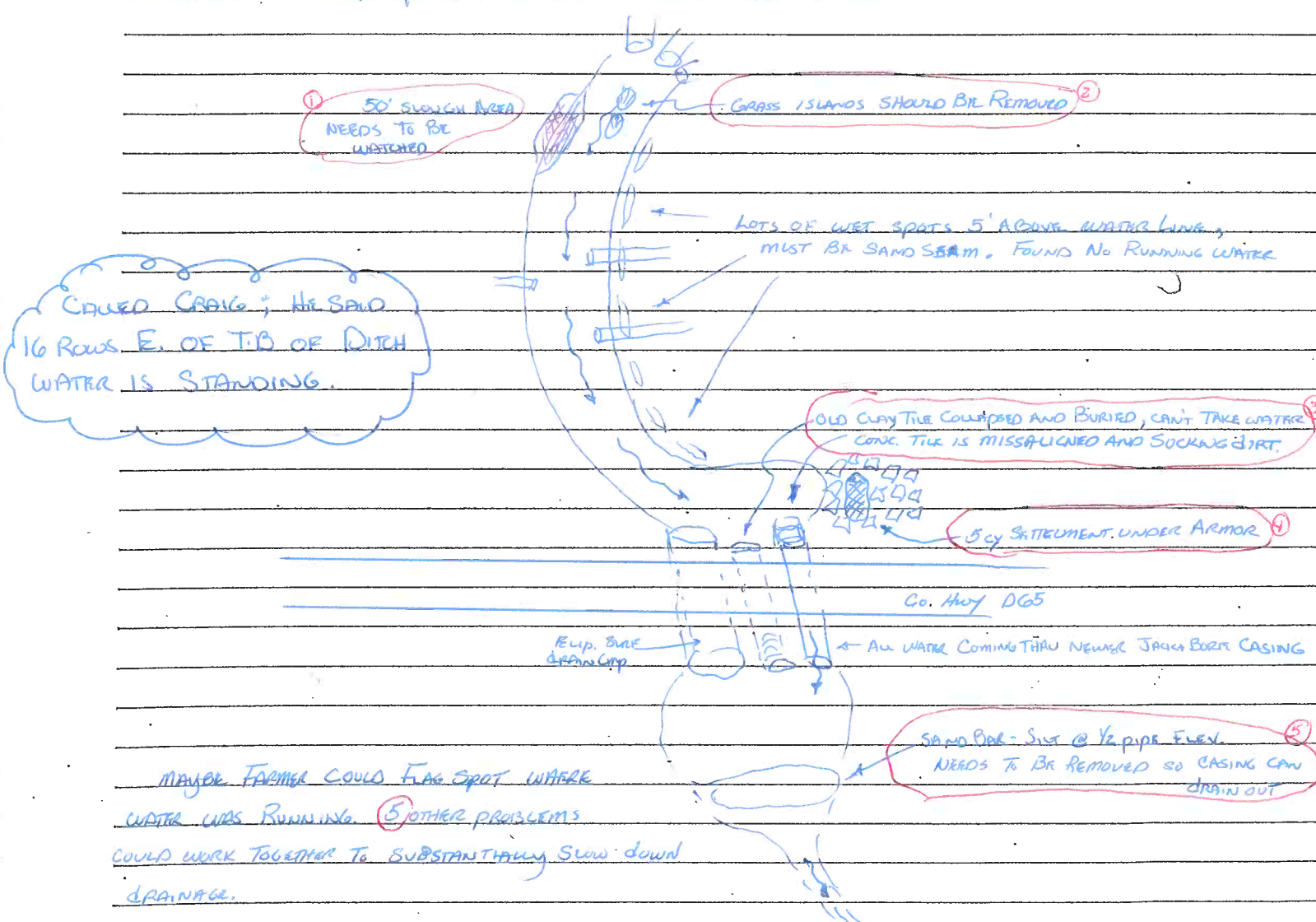
S | M | T | W | T | F | S

SHEET NO.

1 OF 1

DESCRIPTION OF WORK AND MATERIAL USED FOR EACH OPERATION, INCLUDING CONTRACTOR/SUB NAME, ITEM NO. AND LOCATION

ARRIVED @ 9:00 A.M., WALKED ALONG TOP BANK ON W. SIDE TO SEE POSSIBLE TILE FLOW ON E. SIDE. SAW NOTHING RUNNING, OR ICE FLOW. WALKED AROUND TILE OUTLETS AND WALKED TO SOUTH ON E. SIDE OF DITCH, ABOUT 5' ABOVE WATER EL. FOUND LOTS OF DAMP SPOTS, BUT NO RUNNING TILE WATER.



MAJOR FARMER COULD FLAG SPOT WHERE WATER WAS RUNNING. 5 OTHER PROBLEMS COULD WORK TOGETHER TO SUBSTANTIALLY SLOW DOWN DRAINAGE.

I Certify that the work described in this report was incorporated into this contract unless otherwise noted.

Observer's Signature:

[Handwritten Signature]

Date Prepared:

4/17/18

Reviewed by:

Engineer

Date Reviewed

TILE COLLAPSED @ N SIDE OF D65 OLD CLAY/CMO OUTLET



Looking N. From D65



GRASS ISLANDS FROM SILT GENERATED FROM TILE OUTLETS



Rip Rap @ Tule Outlets looks Good



Rio Ran. Settlement in N Ditch of D65 on E. Side DD 34 open Ditch



CONSTRUCTION ENGINEERING
OBSERVATION REPORT

DATE:

4/20/18

DAYS OF WEEK:

S | M | T | W | T | **F** | S

SHEET NO.

1 OF 1

PROJECT NUMBER:

6428.2

COUNTY, ROUTE, ROAD:

DD.34 H.

LOCATION:

DESCRIPTION OF WORK AND MATERIAL USED FOR EACH OPERATION, INCLUDING CONTRACTOR/SUB NAME, ITEM NO. AND LOCATION

Stopped in on way to DD 72, found 150' long x 20' wetter than surrounding ground. No water coming out of ground. Area is between the 2 surface drains on east side. Both have poss. drain. It may be a broken existing tile, but it looks to me like a place that needs tiled. Exploration with long reach backhoe may be warranted. 15 min.

I Certify that the work described in this report was incorporated into this contract unless otherwise noted.

Observer's Signature:

[Signature]

Date Prepared:

4/20/18

Reviewed by:

Engineer

Date Reviewed

Looking South @ West Area



Looking N. @ WET AREA





Drainage Work Order Request For Repair

Hardin County

Date 12/4/2017 Work Order # 201
District # 55-3 Lateral 12 Fund # 51085
Township Concord Section 3 Twp 86 Rge 22 Qtr Sec NW1/4

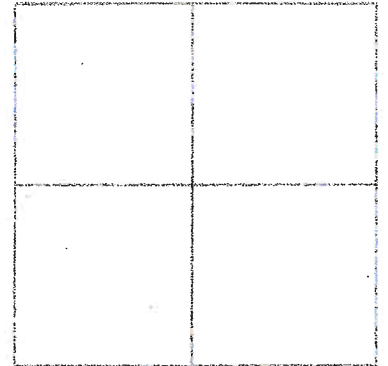
Repair Requested By Jerry Hindman
Address _____ Phone (515) 689-2761

Landowner Jerry Hindman
Address GIS 86220310002 Phone _____

Request Taken By Tina Schlemme

Available for Repair Now? Yes Date Available _____

Problem Description Tile plugged in the RR ROW about 450' south of 280th Street.



Repair labor, materials and equipment _____

Potential Wetlands? Yes-Repair existing tile only No-Repair and maintain tile

Repaired By: _____

Date: _____

Please send statement for services to:

Phone (641) 939-8111
Fax (641) 939-8245

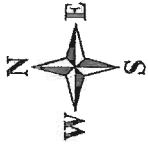
Hardin County Auditor's Office
Attn: Tina Schlemme
1215 Edgington Ave, Suite 1
Eldora, IA 50627

For Office Use Only

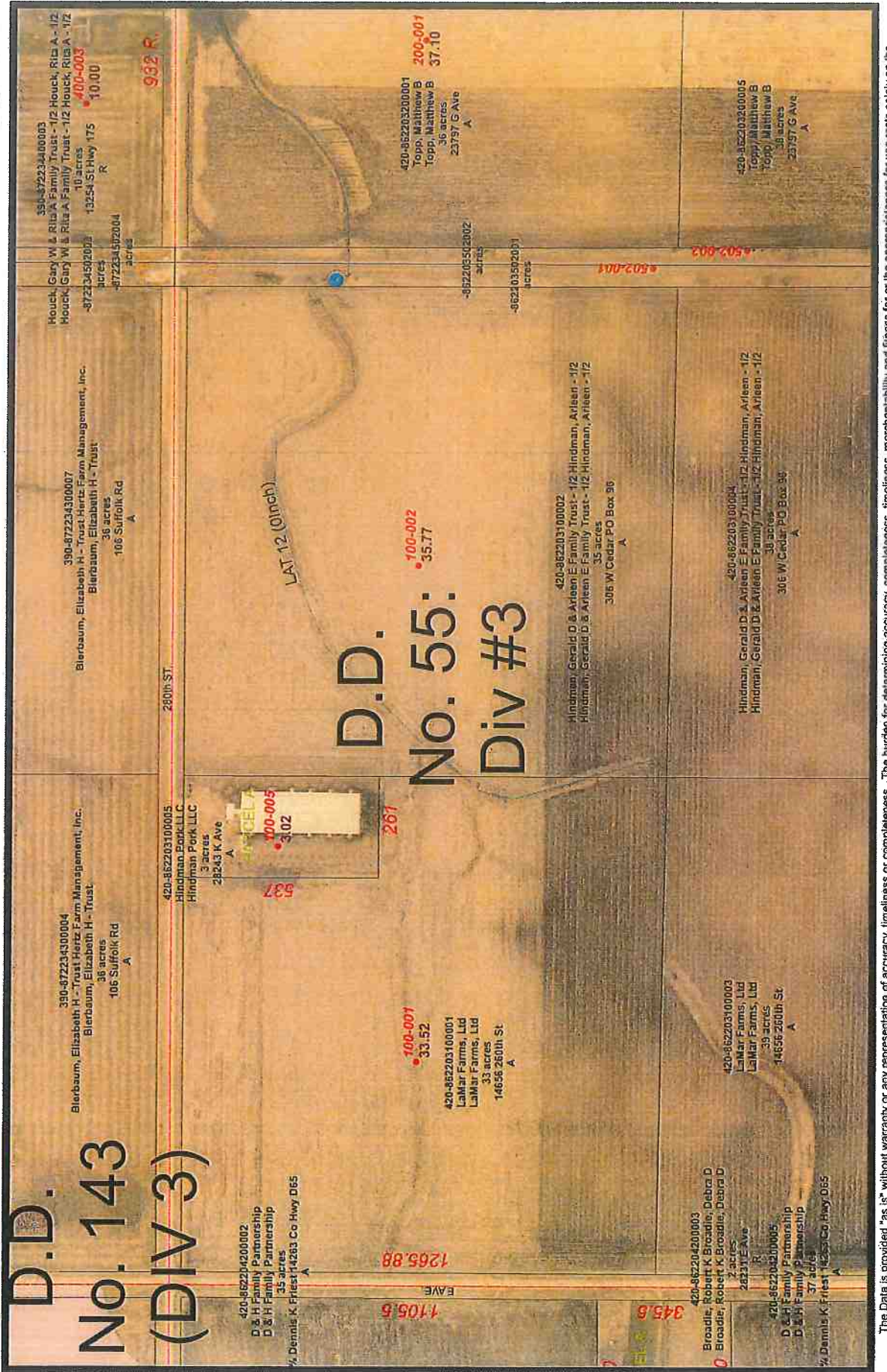
Approved: _____ Date: _____



Hardin County Auditor's Office



Date: 11/29/2017



The Data is provided "as is" without warranty or any representation of accuracy, timeliness or completeness. The burden for determining accuracy, completeness, timeliness, merchantability and fitness for or the appropriateness for use rests solely on the requester. Hardin County makes no warranties, express or implied is to the use of the Data. There are no implied warranties of merchantability or fitness for a particular purpose. The requester acknowledges and accepts the limitations of the Data, including the fact that the Data is dynamic and is in a constant state of maintenance, correction and update. Cadastral Data represents land ownership, but does not define it. This Data does not replace a legal survey.

Drainage District:

55 – Division 3 - Lateral 12

Repair Summary:

- Landowner indicated Lateral 12 tile is plugged in railroad right of way at approximately 450' south of 280th Street in the NW¼ of Section 3, Township 86 North, Range 22 West.
- Excavated hole on east side of railroad tracks and found VCP lateral tile. Pushed tile locator upstream (to West) approximately 30-40 feet where it stopped next to a large mulberry tree in railroad right of way that has been cut down. Mulberry tree is next to railroad box culvert and tile locator appears to have been stopped by tree roots, which are plugging tile.
- Attempted to televise upstream, but only could get 7.5 feet due to sediment in deformed single wall HDPE tile.
- Excavated upstream on lateral tile on west of railroad and found water flow to be sluggish and poor.
- Section of VCP Lateral tile removed was replaced with temporary single wall HDPE patch.

Contractor Time and Materials (spent while CGA was on-site):

Due to scheduling conflict, CGA construction observation was not present while contractor was investigating.

Additional Actions Recommended:

- Remove trees within 50 feet of the existing lateral tile (including inside railroad right of way).
- Root clean and jet the existing Lateral tile.
- CCTV inspect the existing Lateral tile to verify its condition.

I would estimate that the total cost of construction would be approximately \$5,000 for tree removal, root cleaning/jetting and CCTV inspection. This cost does not include engineering fees, Railroad Permits and Railroad insurance. This is assuming that the railroad will allow the Drainage District to remove said trees and work in their right of way. This cost is low enough that neither a hearing nor an engineer's report would be required. However, the tile may need replaced after CCTV inspection, which would be well over \$50,000.

OR

- Replace existing Lateral tile within the railroad right of way.

I would estimate that the total cost of construction would be well over \$50,000 for replacing tile. This cost is high enough that a hearing and engineer's report would be required.



CONSTRUCTION ENGINEERING
OBSERVATION REPORT

DATE: 12/26/17

PROJECT NUMBER: _____
 COUNTY, ROUTE, ROAD: 66363
 LOCATION: 280TH St + 48th St
1055 Lot 12

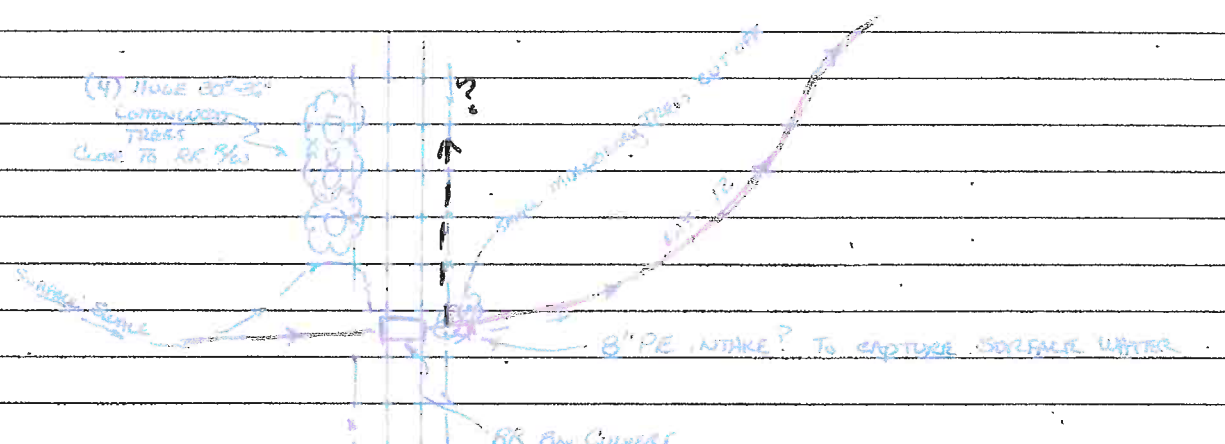
DAYS OF WEEK:

S	M	T	W	T	F	S
---	---	---	---	---	---	---

SHEET NO. _____ OF _____

DESCRIPTION OF WORK AND MATERIAL USED FOR EACH OPERATION, INCLUDING CONTRACTOR/SUB NAME, ITEM NO. AND LOCATION

Working 1" Very Close
Arrived @ 2:30 hrs. Called and talked to Larry Hineman for permission.
He said they dug it up on both sides RR, and ran a "course" up the tile and got
some more tiles. If tile is 18" square, tile should be 12". Primary pipe is found
Roots and or branches the main RR direction. If no roots, it may possibly be /
cleaned and tested. Any trees in area must be cut down and removed.



SECTION OF VCP HAS BEEN REPLACED W/ SINGLE WALL TILE. H₂O FLOWS NORTH TO SOUTH FROM A LATERAL INTO MAIN. EXCELLENT FLOW DOWNSTREAM IN MAIN. TILE MAIN EXCAVATED UPSTREAM OF LATERAL. FLOW FOUND TO BE VERY SLUGGISH/SLOW. TILE LOCATOR PUSHED UPSTREAM 30-40 FEET WHERE A LARGE MULBERRY TREE HAS BEEN CUT DOWN. TREE ROOTS LIKELY PLUGGING TILE @ BOX CURVED

(SON) T RYAN HINEMAN 515-689-9987
 (PAID) LARRY HINEMAN 515-689-2761

I Certify that the work described in this report was incorporated into this contract unless otherwise noted.

Observer's Signature: [Signature] Date Prepared: 12/26/17
 Reviewed by: _____ Engineer _____ Date Reviewed: _____



8" PLASTIC TUB TO LAT 12, POSSIBLE INTAKE



LOOKING WEST @ UPSTREAM ON LAT 12, NOTE WHITE FLAGS



LOOKING WEST ON LAT 12, NOTE FRESHLY CUT TREES



🌐 Looking North on W. R/W Rail Road



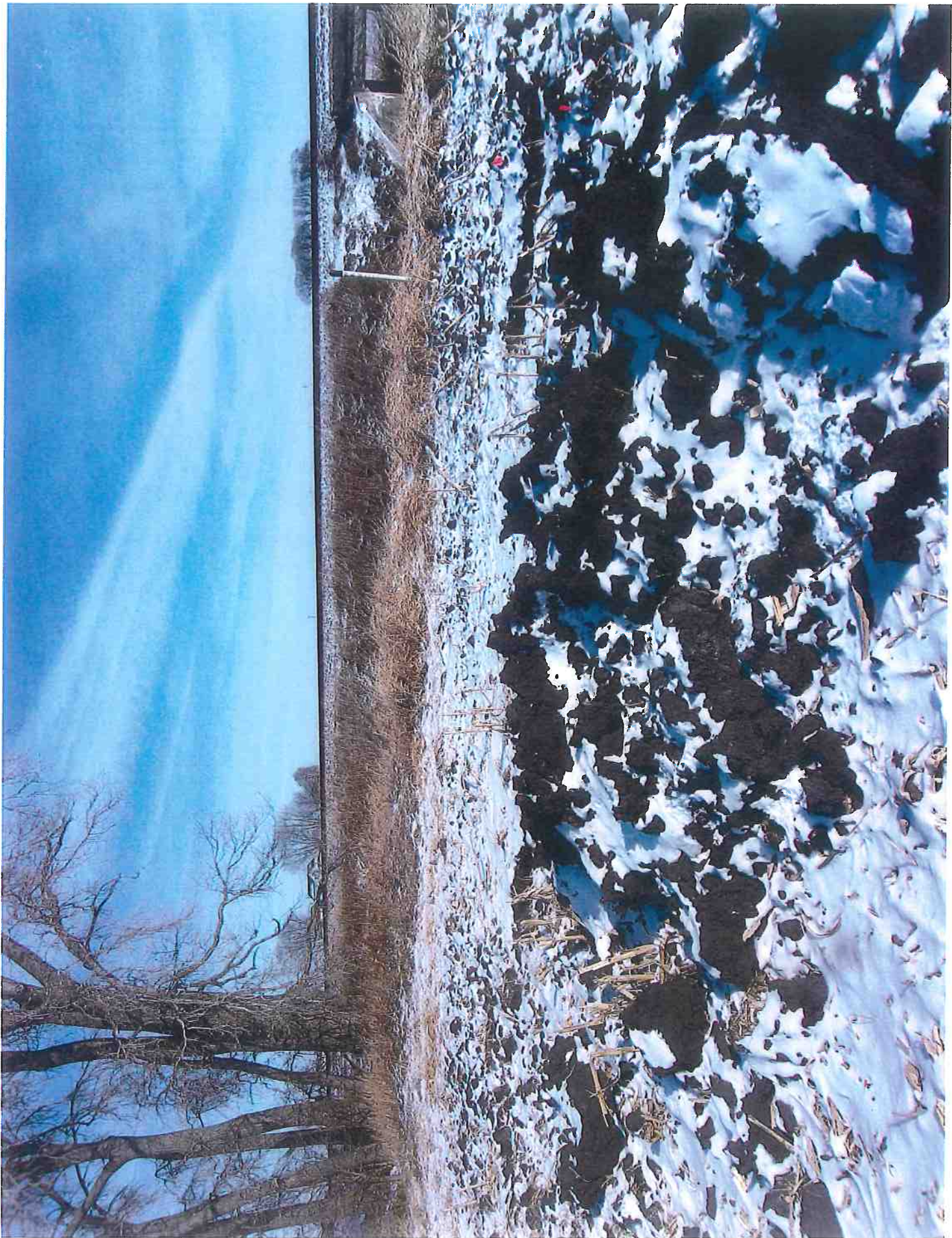
Box Culvert over top of lat 12



Looking North From Inspection Hole



LOOKING EAST DOWN LAT 12



LOOKING EAST DOWN LAT 12



TREES 80'± NORTH OF LAT 12



Williams Excavation &
 Directional Boring
 102 Industrial Dr.
 Ackley, IA
 Phone: 641-485-3925

Main Inspections Small Photos

Mainline ID: DD55 LAT 12	City: FARMER DUG HOLE ON EAST SIDE OF TRACKS	Address:	Project name: 5/16/18 DD 55 LAT 12
Start date/time: 5/16/2018 11:49 AM	Asset length: 7.5 ft.	Weather: Dry	Operator: Paul
Upstream node:	Depth US:	Downstream node:	Depth DS:
Pipe shape: Circular	Pipe material: Clay	Pipe height:	Pipe width:
Comments:			

0 => VCP 7.12

Observations

Distance	Dir. Length	From/To Code	Modifier/Severity	Rating	Comments
7.5 ft.	U	/ Lateral			LATS- LEFT AND RIGHT.

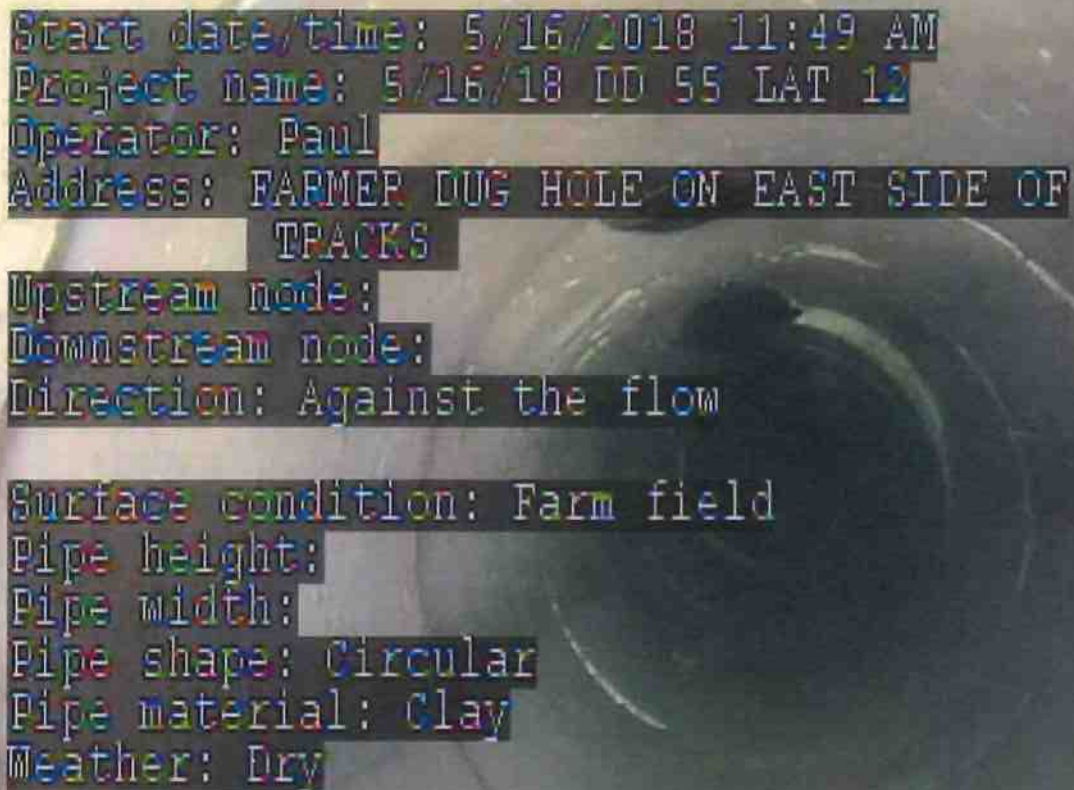


7.5 ft.	U	/ Pipe Type => VCP to SW HBPE			VCP TO PE
---------	---	-------------------------------	--	--	-----------



=> End CCTV due to debris in Flow line.

Inspection's photos



Start date/time: 5/16/2018 11:49 AM
Project name: 5/16/18 DD 55 LAT 12
Operator: Paul
Address: FARMER DUG HOLE ON EAST SIDE OF
TRACKS
Upstream node:
Downstream node:
Direction: Against the flow
Surface condition: Farm field
Pipe height:
Pipe width:
Pipe shape: Circular
Pipe material: Clay
Weather: Dry







Drainage Work Order Request For Repair Hardin County

Date: 4/30/2018

Work Order #: WO00000210

Drainage District: Drainage Districts \DD 119

Sec-Twp-Rge: 26-89-19 **Qtr Sec:** N1/2

Location/GIS: _____

Requested By: Hardin County Engineer

Contact Phone: _____

Contact Email: _____

Landowner (if different): County Highway

Description: County Highway S56 has dip in pavement with a large void under it. Looks like DD 119 tile runs directly under the road and has possibly collapsed.

Repair labor, materials and equipment: _____

Repaired By: _____ **Date:** _____

Please reference work order # and send statement for services to:
Hardin County Auditor's Office
Attn: Drainage Clerk
1215 Edgington Ave, Suite 1
Eldora, IA 50627
Phone (641) 939-8111
Fax (641) 939-8245

For Office Use Only

Approved: _____ **Date:** _____

Drainage District:

119 Lat 1C and 1C1

Repair Summary:

- Per previous investigation summary, contractor excavated sinkhole in the west ditch of County Highway S56 and found 5 inch VCP private/Secondary Roads tile flowing from west to east. Said tile had been broken by a telecommunication utility line running through/on top of said tile. Directed contractor to contact the Secondary Roads Department as how to repair the private/Secondary Roads tile.
- While 5 inch private tile was open, ran tile locator downstream in it and found that Lateral 1C1 tile appears to run from south to north near the middle of the south bound land of County Highway S56.
- Visual observation of the upstream area could not find any standing water along County Highway S56 or in the fields west of the same.

Contractor Time and Materials (spent while CGA was on-site):

See attached Tabulated Contractor Time and Materials Sheet.

Additional Actions Recommended:

Even though the Secondary Roads Department filled the void under County Highway S56 with flowable mortar, it does not appear that the drainage tile has been blocked in the area (based on visual observation). Only further Investigation by excavation could confirm this, though. Given the location of the Lateral 1C1 tile (under road surface of County Highway S56, this would require excavation of the road surface). Given the expense and difficult nature of this, we recommend monitoring the situation to see if any further depressions in the pavement develop or if reports of restricted drainage occur.

It should be noted that it is unknown if there are any additional voids under County Highway S56 due to soil erosion by the Lateral tile. If there are, it is possible that the road surface of County Highway S56 could collapse during the monitoring period.



Tabulated Contractor Time and Materials

Date	Totals	6/4/2018
Workman (hrs)	2	2
Mini Excavator (hrs)	2	2

CONSTRUCTION ENGINEERING
OBSERVATION REPORT

DATE:

6/4/18

PROJECT NUMBER: 6928
 COUNTY, ROUTE, ROAD: DD 119
 LOCATION: S56 S. OF Akeley

DAYS OF WEEK:

S M T W T F S

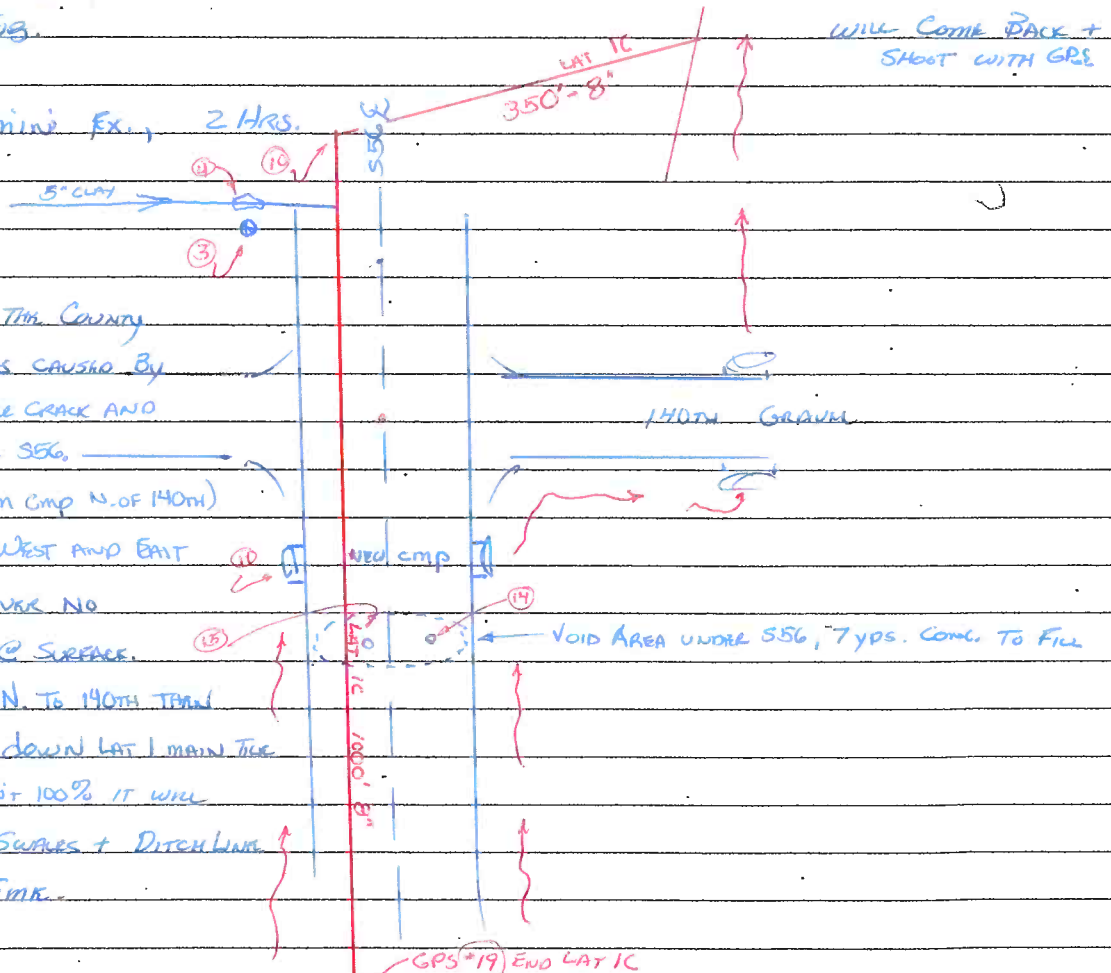
SHEET NO.

1 OF 1

DESCRIPTION OF WORK AND MATERIAL USED FOR EACH OPERATION, INCLUDING CONTRACTOR/SUB NAME, ITEM NO. AND LOCATION

Sunny, 65°, calm, drying conditions, RAIN SATURDAY
 ARRIVED @ JOB SITE @ 8:15., PAUL WILLIAMS ON SITE WITH MINI EX.
 DIGGING IN DITCH @ BLEW-OUT ON W. SIDE S56, N. OF 140TH ST.
 FOUND 5" CLAY TILE RUNNING W TO E., PERPENDICULAR TO S56. RAN TILE LOCATOR CABLE TO E.
 50' TO MIDDLE OF S. BOUND LANE OF S56. LAT IC IS IN S56. CALLED BRUCE (CO. ENGR.)
 HE SAID VOID THAT WAS FILLED WITH FLOWABLE MATERIAL WAS SOUTH OF 140TH AND 20' SOUTH
 OF X CURVE IN S56. FOUND DRILL HOLES IN HMA. NO OTHER HOLES IN DITCH FOUND.
 9:30 LEFT JOB.

1 MAN, mini Ex., 2 HRS.



I THINK THE VOID THAT THE COUNTY
 FILLED WITH 7 YDS OF CONC. WAS CAUSED BY
 LAT IC. THERE IS A VERY VISIBLE CRACK AND
 LOW SWALE IN S. BOUND LANE S56.
 AT THE END OF LAT IC (1000' FROM CMP N. OF 140TH)
 THERE IS A SURFACE SWALE TO WEST AND EAST
 OF S56 IN FARM FIELDS. HOWEVER NO
 WATER BACKUPS CAN BE SEEN @ SURFACE.
 LUCKILY ALL SURFACE WATER RUNS N. TO 140TH TRAIL
 TO NE QUAD OF 140TH AND S56, DOWN LAT I MAIN TILE
 AND SWALE. EVEN IF LAT IC ISN'T 100% IT WILL
 PROBABLY DRAIN DOWN SURFACE SWALES + DITCH LINE.
 NO ACTION NEEDED AT THIS TIME.

I Certify that the work described in this report was incorporated into this contract unless otherwise noted.

Observer's Signature: [Signature] Date Prepared: 6/4/18
 Reviewed by: _____ Engineer _____ Date Reviewed: _____

Field Swales

FIELD SWALE

Looking Down Stream From #4 @ Case



CABLE IN TOP OF TUE



CABLE GOING THRU TIE



CABLE LOCATES IN DITCH



CABLE LOCATES IN DITCH



6928 DD119 6-5-18RB

1,3645586.488,5043591.749,1108.983,140TH/S56
2,3645618.310,5043555.653,1105.113,HICK INTK
3,3645819.724,5043552.858,1100.561,FL BEEHIVE INTK
4,3645825.688,5043550.435,1103.073,GS 5"CLAY E/W
5,3645830.751,5043550.385,1102.991,UGTL
6,3645817.161,5043550.885,1103.001,UGTL
7,3645915.720,5043554.522,1103.235,FL 24"CMP
8,3645826.996,5043577.882,1107.744,EOA S56
9,3645827.607,5043600.315,1107.707,EOA S56
10,3645826.640,5043582.140,1107.916,TILELOCATE LAT1C
11,3645533.241,5043562.363,1103.961,FL 24"CMP
12,3645502.642,5043581.919,1108.692,EOA S56
13,3645501.993,5043604.186,1108.826,EOA S56
14,3645501.978,5043597.982,1109.080,BOREHOLE CONC
15,3645502.227,5043586.244,1108.916,BOREHOLE CONC
16,3645014.313,5043586.757,1111.447,EOA S56
17,3645015.371,5043608.858,1111.585,EOA S56
18,3645014.024,5043590.506,1111.716,HMA LOW SPOT N/S
19,3644916.409,5043600.460,1113.120,HMA ENDLAT1C
20,3666252.640,5048812.103,1068.407,GPS 7001
7002,3650755.010,5048875.510,1090.740,GPS 7002
7002_GNSS,3650755.010,5048875.510,1090.740,Autonomous Setup



Drainage Work Order Request For Repair Hardin County

Date: 4/26/2018

Work Order #: WO00000208

Drainage District: Drainage Districts \DD 167

Sec-Twp-Rge: 04-86-20 Qtr Sec: NE SE

Location/GIS: 86-20-04-400-002

Requested By: Robert Jenson

Contact Phone: (641) 849-0341

Contact Email: _____

Landowner (if different): Neil Martin

Description: Blowout in lower end of waterway in NE SE 4-86-20 with "babies" northwest of it. The ground cover over the tile in this area is very shallow.

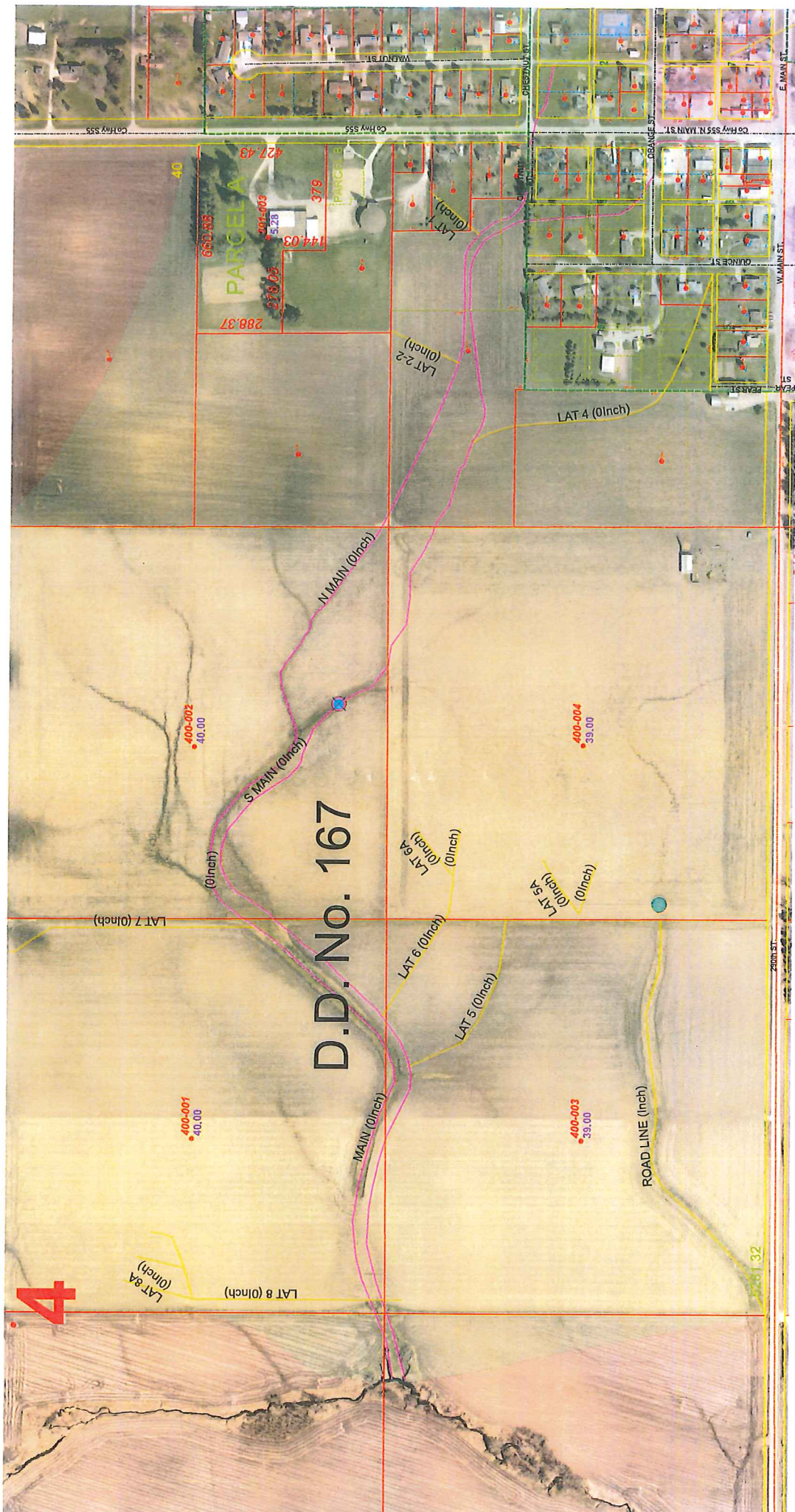
Repair labor, materials and equipment: _____

Repaired By: _____ Date: _____

Please reference work order # and send statement for services to:
Hardin County Auditor's Office
Attn: Drainage Clerk
1215 Edgington Ave, Suite 1
Eldora, IA 50627
Phone (641) 939-8111
Fax (641) 939-8245

For Office Use Only

Approved: _____ Date: _____



D.D. No. 167

PARCELA

288.37

278.03

144.03

5.28

427.49

379

660.03

40

LAT 8A (0inch)

LAT 8 (0inch)

LAT 7 (0inch)

MAIN (0inch)

S MANN (0inch)

N MANN (0inch)

LAT 6A (0inch)

LAT 6 (0inch)

LAT 5 (0inch)

LAT 9A (0inch)

LAT 9B (0inch)

LAT 9C (0inch)

LAT 9D (0inch)

LAT 9E (0inch)

ROAD LINE (inch)

32nd ST

200th ST

W MAIN ST

E MAIN ST

CHURCH ST

ORANGE ST

PERSHALL ST

WILBUR ST

4

400-001
40.00

400-002
40.00

400-003
39.00

400-004
39.00

Drainage District:

167

Investigation Summary:

Landowner in the NE¼ SE¼ of Section 4 Township 86 North, Range 20 West reported a blowout/sinkhole in waterway, with smaller depressions upstream (northwest) of said larger blowout/sinkhole. Visual observation found a 6 inch VCP tile 1½'± to 2'± deep (assumed to be south main tile). Water is exiting the tile through multiple holes upstream, flowing overland flow to the southeast through the waterway, and then entering back into the tile.

Contractor Time and Materials (spent while Ryken was on-site):

None as only visual observation performed.

Additional Actions Recommended:

Given the nature of the water flow, it is evident that a tile blockage exists within the area of investigation. Said blockage should be found, removed, and then both the blowout/sinkhole repaired. Also, the multiple holes upstream should be excavated and repaired as necessary. Due to the lack of soil cover, repairs would typically be performed with concrete pipe. However, concrete pipe is only available in 12 inch and larger diameter. Therefore, the repairs must either be performed with 6 inch dual wall HPDE tile or 12 inch concrete pipe.

Since this is the second work order in 2 years in this area, the District Trustees may wish investigate relocation or replacement of the district tile to provide for more soil cover, extended lifespan, and fewer repairs.



CONSTRUCTION ENGINEERING
OBSERVATION REPORT

DATE:

5/11/18

PROJECT NUMBER:

6954.1

DAYS OF WEEK:

S M T W T F S

COUNTY, ROUTE, ROAD:

DD167

SHEET NO.

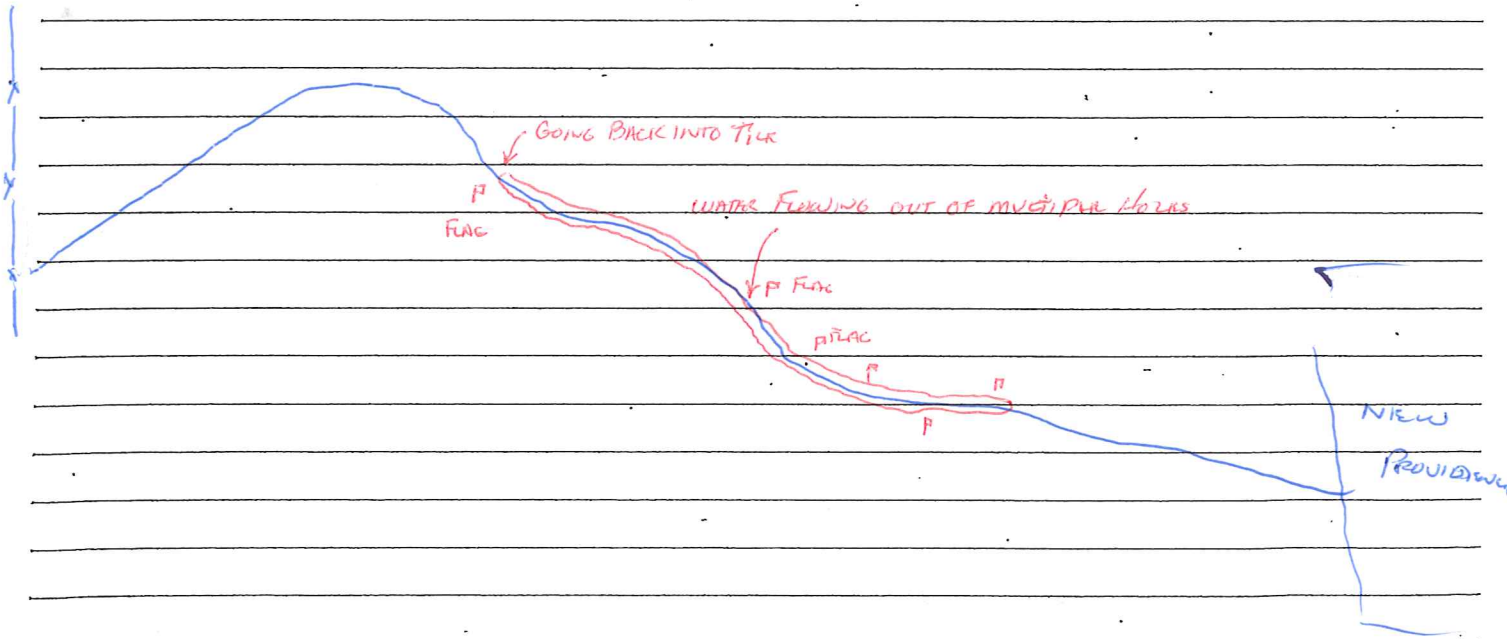
OF

LOCATION:

New Providence, West

DESCRIPTION OF WORK AND MATERIAL USED FOR EACH OPERATION, INCLUDING CONTRACTOR/SUB NAME, ITEM NO. AND LOCATION

Partly Sunny, 65°, Windy From East, Rain Earlier
Arrived @ Job Site 9:00 A.M., called and talked to Robert Jensen,
He met me and drove his pickup out to Blow-outs Found 6"± clay tile
1 1/2 - 2' deep, Blowing out water in multiple places (6 or more) all look to
be joints. Must have a collapse down stream causing water to surge up thru
butt joints and then go back into tile past the collapse or blockage.
This looks to be the S. main
Find and fix blockage ASAP, the rest of tile should be OK.
Talked to Robert about shifting swage or tile route to get more cover.
This will be an on going problem with the minimum cover this butt joint tile
has.



I Certify that the work described in this report was incorporated into this contract unless otherwise noted.

Observer's Signature:

[Handwritten Signature]

Date Prepared:

5/11/18

Reviewed by:

Engineer

Date Reviewed

Looking NW @ Biggest Hole, 2' cover

